



TATE COUNTY SHERIFF'S OFFICE

1 Justice Drive Senatobia, MS 38668

Office 662-562-4434 • Fax 662-562-9236 • Jail 662-562-5466

LUKE SHEPHERD, SHERIFF

February 26, 2026

The Honorable Trent Kelly
2243 Rayburn House Office Building
Washington, DC 20515

Dear Congressman Kelly,

I am writing to express my strong support for the Community Project Funding request submitted on behalf of the **Tate County Sheriff's Office (Tate County, Mississippi)**.

This funding would provide essential equipment that will directly support law enforcement officers in their daily mission to protect the public and maintain community safety. Reliable, modern equipment is critical for effective policing, officer safety, and timely emergency response. This investment would help ensure the department has the tools necessary to meet the needs of the community it serves.

The **Tate County Sheriff's Office** plays a vital role in safeguarding residents, responding to emergencies, and supporting public safety efforts across the community. As demands on local law enforcement continue to increase, access to updated equipment will enhance operational readiness and improve overall service to the public.

This project represents a responsible and targeted use of federal funds that will deliver tangible benefits to the community. By strengthening law enforcement capabilities, it will help create a safer environment for residents, businesses, and visitors while supporting the officers who work every day to keep our community secure.

Thank you for your continued leadership and commitment to supporting local communities and public safety. I respectfully urge your support for this important Community Project Funding request.

Sincerely,

A handwritten signature in blue ink that reads "Alee Dixon".

Alee Dixon

Superintendent, Tate County School District
Tate County, MS
662-288-1358



TATE COUNTY SHERIFF'S OFFICE

1 Justice Drive Senatobia, MS 38668

Office 662-562-4434 • Fax 662-562-9236 • Jail 662-562-5466

LUKE SHEPHERD, SHERIFF

February 26, 2026

The Honorable Trent Kelly
2243 Rayburn House Office Building
Washington, DC 20515

Dear Congressman Kelly,

I am writing to express my strong support for the Community Project Funding request submitted on behalf of the **Tate County Sheriff's Office (Tate County, Mississippi)**.

This funding would provide essential equipment that will directly support law enforcement officers in their daily mission to protect the public and maintain community safety. Reliable, modern equipment is critical for effective policing, officer safety, and timely emergency response. This investment would help ensure the department has the tools necessary to meet the needs of the community it serves.

The **Tate County Sheriff's Office** plays a vital role in safeguarding residents, responding to emergencies, and supporting public safety efforts across the community. As demands on local law enforcement continue to increase, access to updated equipment will enhance operational readiness and improve overall service to the public.

This project represents a responsible and targeted use of federal funds that will deliver tangible benefits to the community. By strengthening law enforcement capabilities, it will help create a safer environment for residents, businesses, and visitors while supporting the officers who work every day to keep our community secure.

Thank you for your continued leadership and commitment to supporting local communities and public safety. I respectfully urge your support for this important Community Project Funding request.

A handwritten signature in blue ink, appearing to read "David Haynes", with a long, sweeping underline.

Sincerely,

David Haynes
Senior Pastor, First Baptist Church
Senatobia, MS
662-407-9252



TATE COUNTY SHERIFF'S OFFICE

1 Justice Drive Senatobia, MS 38668

Office 662-562-4434 • Fax 662-562-9236 • Jail 662-562-5466

LUKE SHEPHERD, SHERIFF

February 26, 2026

The Honorable Trent Kelly
2243 Rayburn House Office Building
Washington, DC 20515

Dear Congressman Kelly,

I am writing to express my strong support for the Community Project Funding request submitted on behalf of the **Tate County Sheriff's Office (Tate County, Mississippi)**.

This funding would provide essential equipment that will directly support law enforcement officers in their daily mission to protect the public and maintain community safety. Reliable, modern equipment is critical for effective policing, officer safety, and timely emergency response. This investment would help ensure the department has the tools necessary to meet the needs of the community it serves.

The **Tate County Sheriff's Office** plays a vital role in safeguarding residents, responding to emergencies, and supporting public safety efforts across the community. As demands on local law enforcement continue to increase, access to updated equipment will enhance operational readiness and improve overall service to the public.

This project represents a responsible and targeted use of federal funds that will deliver tangible benefits to the community. By strengthening law enforcement capabilities, it will help create a safer environment for residents, businesses, and visitors while supporting the officers who work every day to keep our community secure.

Thank you for your continued leadership and commitment to supporting local communities and public safety. I respectfully urge your support for this important Community Project Funding request.

Sincerely,

A handwritten signature in blue ink that reads "Glenn Billingsley". The signature is fluid and cursive, with a large loop at the end.

Glenn Billingsley
Mayor, Town of Coldwater, Mississippi
Coldwater, MS
662-622-7241



TATE COUNTY SHERIFF'S OFFICE

1 Justice Drive Senatobia, MS 38668

Office 662-562-4434 • Fax 662-562-9236 • Jail 662-562-5466

LUKE SHEPHERD, SHERIFF

February 26, 2026

The Honorable Trent Kelly
2243 Rayburn House Office Building
Washington, DC 20515

Dear Congressman Kelly,

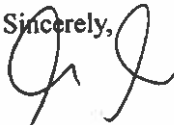
I am writing to express my strong support for the Community Project Funding request submitted on behalf of the **Tate County Sheriff's Office (Tate County, Mississippi)**.

This funding would provide essential equipment that will directly support law enforcement officers in their daily mission to protect the public and maintain community safety. Reliable, modern equipment is critical for effective policing, officer safety, and timely emergency response. This investment would help ensure the department has the tools necessary to meet the needs of the community it serves.

The **Tate County Sheriff's Office** plays a vital role in safeguarding residents, responding to emergencies, and supporting public safety efforts across the community. As demands on local law enforcement continue to increase, access to updated equipment will enhance operational readiness and improve overall service to the public.

This project represents a responsible and targeted use of federal funds that will deliver tangible benefits to the community. By strengthening law enforcement capabilities, it will help create a safer environment for residents, businesses, and visitors while supporting the officers who work every day to keep our community secure.

Thank you for your continued leadership and commitment to supporting local communities and public safety. I respectfully urge your support for this important Community Project Funding request.

Sincerely,


Greg Graves
Mayor of Senatobia
Senatobia, MS
662-292-6002

Mississippi House of Representatives

COMMITTEE ASSIGNMENTS:

Ways & Means, Chairman
Compilation, Revision and Publication
Executive Contingent Fund
Investigate State Offices
Judiciary A
Judiciary En Banc
Legislative Budget Committee
Wildlife, Fisheries and Parks



214 South Ward Street
Senatobia, MS 38668
jlamar@house.ms.gov

Capitol: 601.359.3343
Office: 662.562.6537

REPRESENTATIVE JOHN THOMAS "TREY" LAMAR, III District 8 TATE AND LAFAYETTE COUNTIES

February 26, 2026

The Honorable Trent Kelly
2243 Rayburn House Office Building
Washington, DC 20515

Dear Congressman Kelly,

I am writing to express my strong support for the Community Project Funding request submitted on behalf of the Tate County Sheriff's Office (Tate County, Mississippi).

This funding would provide essential equipment that will directly support law enforcement officers in their daily mission to protect the public and maintain community safety. Reliable, modern equipment is critical for effective policing, officer safety, and timely emergency response. This investment would help ensure the department has the tools necessary to meet the needs of the community it serves.

The Tate County Sheriff's Office plays a vital role in safeguarding residents, responding to emergencies, and supporting public safety efforts across the community. As demands on local law enforcement continue to increase, access to updated equipment will enhance operational readiness and improve overall service to the public.

This project represents a responsible and targeted use of federal funds that will deliver tangible benefits to the community. By strengthening law enforcement capabilities, it will help create a safer environment for residents, businesses, and visitors while supporting the officers who work every day to keep our community secure.

Thank you for your continued leadership and commitment to supporting local communities and public safety. I respectfully urge your support for this important Community Project Funding request.

Sincerely,

A handwritten signature in blue ink that reads "Trey Lamar".

John T. "Trey" Lamar, III



DUNS: 106681556
 CAGE CODE: 9QBJ1
 SAM.GOV: QLP5FQEM5QH1

QUOTE

Credit card transactions may require a 4% charge

Airworx LLC
 3504 Highway 153 #301
 Greenville, South Carolina 29611
 United States

8648989444
 airworxdrone.com

BILL TO
Tate County Sheriff's Office (MS)
 Jacob Red
 107 Court Street
 Senatobia, Mississippi 38668
 United States

662-366-0014
 jred@tatecountymys.gov

Estimate Number: 23315
Estimate Date: February 26, 2026
Valid Until: March 28, 2026
Grand Total (USD): \$31,998.00

Items	Quantity	Price	Amount
Airworx Go-Command™ OG Ultrabright Mission-Ready Kit DJI Matrice 4TD Standalone The all-new water and dust-resistant DJI Matrice 4TD, primarily designed for DJI Dock 3, can be paired with a DJI RC Plus 2 Enterprise controller for standalone use. The 4TD offers all of the same features and capabilities as the Matrice 4T, but with extended flight time and an IP55 rating. Combined with our Mission-Ready Kit, you'll have everything you need for a successful mission. Package Includes: x1 Matrice 4TD Aircraft x1 RC Plus 2 Enterprise Controller x4 4D Series Flight Battery x1 WB37 Dual Batteries with charge hub x1 AS1 Speaker x1 AL1 Spotlight x3 Propellers (Pair) x1 240W Power Adapter x1 240W Charging Hub x1 SDC Power Adaptor Cable 1x Airworx OG Go-Command™ Weatherproof Wheeled Case with 24" Monitor.	2	\$15,999.00	\$31,998.00



DUNS: 106681556
 CAGE CODE: 9QB.J1
 SAM.GOV: QLP5FQEM5QH1

QUOTE

Credit card transactions may require a 4% charge

Airworx LLC
 3504 Highway 153 #301
 Greenville, South Carolina 29611
 United States

8648989444
 airworxdrone.com

Items	Quantity	Price	Amount
<p>This system is stored and protected in our Airworx Go-Command UltraBright monitor case with 24" direct sunlight viewable display that features wireless screen mirroring from the smart controller, custom foam set to carry the aircraft and all batteries/accessories and an EcoFlow integrated battery system to power the monitor for up to 10 hours.</p> <p>Updated Pricing: 12/2025</p>			
<p>*Airworx Mission-Ready System Preparation* Every drone system we deliver is fully prepared by our expert staff prior to shipment to ensure it is mission-ready upon arrival. This includes:</p> <ul style="list-style-type: none"> -Complete system setup and activation -Firmware and software updates across all components -Proper pairing and configuration of aircraft, controllers, and accessories -Bench testing and functional verification (including flight testing when applicable) -Full charging of all batteries so the system is ready for immediate deployment <p>Your system arrives ready to deploy—no setup, no guesswork, no delays.</p>	1	\$0.00	\$0.00
<p>***Lifetime Support of Product and Team*** Airworx provides lifetime after-sale support, ensuring you have expert assistance whenever needed. For DJI repairs or replacements, we manage the entire claim process, provide free shipping labels, and cover the cost to DJI upfront upon your approval—ensuring faster service and prompt return of your equipment without payment delays.</p>	1	\$0.00	\$0.00



DUNS: 106681556
CAGE CODE: 90BJ1
SAM.GOV: QLP5FQEM5QH1

QUOTE

Credit card transactions may require a 4% charge

Airworx LLC
3504 Highway 153 #301
Greenville, South Carolina 29611
United States

8648989444
airworxdrone.com

Items	Quantity	Price	Amount
<p>In additional, Airworx is owned and operated by active law enforcement officers and other first responders. Therefore, we understand the importance and necessity of this equipment during any emergency incident. Our expert staff is only a phone call away, 24/7 for emergency support.</p>			
Grand Total (USD):			\$31,998.00

Notes / Terms

Once approved in email or via PO for an order, we will begin the setup process. All of our systems and equipment must be setup and activated (starts the warranty status) which then becomes non-refundable and non-returnable. In most cases there is no possibility for a return option. However, we will always support and ensure satisfaction that products we sell operate to the standard expectations of the manufacturer.

Quotes are valid 30-days unless otherwise stated in this document, and quotes depend on ability to source the products.

Thank you for considering using our South Carolina based small business for your purchase!



DUNS: 106681556
 CAGE CODE: 9QBJ1
 SAM.GOV: QLPSFQEM5QH1

QUOTE

Credit card transactions may require a 4% charge

Airworx LLC
 3504 Highway 153 #301
 Greenville, South Carolina 29611
 United States

8648989444
 airworxdrone.com

BILL TO

Tate County Sheriff's Office (MS)
 Jacob Red
 1 Justice Drive
 Senatobia, Mississippi 38668
 United States

662-612-0727
 jred@tatecountymms.gov

Estimate Number: 23309

Estimate Date: February 26, 2026

Valid Until: March 28, 2026

Grand Total (USD): \$7,499.00

Items	Quantity	Price	Amount
Airworx Go-Command™ TacLite Avata 2 Tactical System *No DJI Care available - 1-Year DJI Defect warranty ONLY* The Airworx Avata 2 system includes the following inside our custom TacLite Go-Command monitor case with 15" LED display and battery module: 1x Avata 2 Airframe 1x Goggles 3 1x Motion 3 Controller 2x Battery Charging Hub 6x Flight Batteries 1x CDC Rapid Charging Case 1x Airworx Tactical 4-Head Light Kit 1x Extra set of light brackets 1x Set of Extra Props 1x Airworx Go-Command Case w/15" built-in monitor. Additionally we include a 200w power supply adapter and cables to charge all components simultaneously.	1	\$7,499.00	\$7,499.00
Airworx Mission-Ready System Preparation Every drone system we deliver is fully prepared by our expert staff prior to shipment to ensure it is mission-ready upon arrival. This includes: -Complete system setup and activation	1	\$0.00	\$0.00



DUNS: 106681556
 CAGE CODE: 90BJ1
 SAM.GOV: QLPSFOEMSQH1

QUOTE

Credit card transactions may require a 4% charge

Airworx LLC
 3504 Highway 153 #301
 Greenville, South Carolina 29611
 United States

8648989444
 airworxdrone.com

Items	Quantity	Price	Amount
<p>-Firmware and software updates across all components</p> <p>-Proper pairing and configuration of aircraft, controllers, and accessories</p> <p>-Bench testing and functional verification (including flight testing when applicable)</p> <p>-Full charging of all batteries so the system is ready for immediate deployment</p> <p>Your system arrives ready to deploy—no setup, no guesswork, no delays.</p>			
<p>***Lifetime Support of Product and Team*** Airworx provides lifetime after-sale support, ensuring you have expert assistance whenever needed. For DJI repairs or replacements, we manage the entire claim process, provide free shipping labels, and cover the cost to DJI upfront upon your approval—ensuring faster service and prompt return of your equipment without payment delays.</p> <p>In additional, Airworx is owned and operated by active law enforcement officers and other first responders. Therefore, we understand the importance and necessity of this equipment during any emergency incident. Our expert staff is only a phone call away, 24/7 for emergency support.</p>	1	\$0.00	\$0.00
Grand Total (USD):			\$7,499.00

Notes / Terms

Once approved in email or via PO for an order, we will begin the setup process. All of our systems and equipment must be setup and activated (starts the warranty status) which then becomes non-refundable and non-returnable. In most cases there is no possibility for a return option. However, we will always support and ensure satisfaction that products we sell operate to the standard expectations of the manufacturer.



DUNS: 106681556
CAGE CODE: 9QBJ1
SAM.GOV: QLP5FQEM5QH1

QUOTE

Credit card transactions may require a 4% charge

Airworx LLC
3504 Highway 153 #301
Greenville, South Carolina 29611
United States

8648989444
airworxdrones.com

Quotes are valid 30-days unless otherwise stated in this document, and quotes depend on ability to source the products.

Thank you for considering using our South Carolina based small business for your purchase!

COMSOUTH

MISSION CRITICAL SOLUTIONS

1378 North Veterans Memorial Blvd., Tupelo, MS 38804
t. 662-296-1450 f.



KENWOOD
ZETRON

QUOTE

Number TUPQ3424

Date Jan 13, 2025

Sold To
Tate County Sheriff's Department Matt Wilson 1 Justice Drive Senatobia, MS 38668
Phone Fax

Ship To
Tate County Sheriff's Department Matt Wilson 1 Justice Drive Senatobia, MS 38668
Phone Fax

Salesperson	P.O. Number	Ship Via	Terms
Jody Stringer			

Line	Qty	Model Number	Description	Unit Price	Ext. Price
1	1	39-30017-CM	Code 3 Supervisor Matrix Interior Front Barlight - Dual Blue/White	\$866.28	\$866.28
2	1	SFMTG-TSUNIV	Code 3 Thin Supervisor Universal Bracket		
3		CZMATSIB	SERIAL INTERFACE BOX (SIB) MATRIX	\$152.03	\$152.03
4	4	MR6MC-BW	MR6 multicolor LED, hood or flush mount (hardware included) blue/white	\$81.35	\$325.40
5	4	MICROPAK-B	Code 3 Micropak 4-LED Flush Mount LED Module	\$66.51	\$266.04
6	1	SL8C-BBB	Federal Signal Signal Master 8-Head Directional Bar - Blue	\$301.33	\$301.33
7	1	SLB-FRD15ND	Federal Signal Latitude Directional Stick No Drill Mount For 2015+ Ford F-150/2019+ Ram 1500	\$44.20	\$44.20
8	1	H3CS-W	Code 3 100 Watt Undercover Siren	\$205.71	\$205.71
9	1	C3900U	Code 3 Slimline 100 Watt Speaker "U" Bracket	\$216.03	\$216.03
10	1	?75105+22051	Streamlight Stinger Series Charger (DC Only)	\$62.11	\$62.11
11	1	INSTALLKIT	Wire, Fuses, Loom, etc.	\$150.00	\$150.00
12	1	INSTALL	Installation	\$1,075.00	\$1,075.00

SubTotal	\$3,664.13
Tax	\$0.00
Shipping	\$0.00
Total	\$3,664.13

1378 North Veterans Memorial Blvd., Tupelo, MS 38804
t. 662-296-1450 f.

Number TUPQ3934

Date Feb 27, 2026


Sold To	
Tate County Sheriff's Department Matt Wilson 1 Justice Drive Senatobia, MS 38668	
Phone	
Fax	

Ship To	
Tate County Sheriff's Department Matt Wilson 1 Justice Drive Senatobia, MS 38668	
Phone	
Fax	

Salesperson	P.O. Number	Ship Via	Terms
Jody Stringer			

Line	Qty	Model Number	Description	Unit Price	Ext. Price
1			Patrol Durango		
2	1	9SX8EEEE	Whelen Edge® 9X 48" DUO Color Lightbar, Blue/White Front, Blue/Amber Rear with Takedown Lights, Alley Lights and Brake Lights	\$1,737.14	\$1,737.14
3	1	C399S	Whelen Core-S® WeCanX® Control System, 200-Watt Amplifier Control Module, Flashing Outputs, Includes 3 CAN Ports and Controls Up to 99 Devices/Remote Modules, Control Head and Other Modules Purchased Separately. 12 VDC	\$1,238.57	\$1,238.57
4	1	CCTL6	Whelen WeCanX® Control Head, Includes 3 Section Control Head and 8 Push-Buttons, 4-Position Slide Switch with a 7-Position Rotary Knob. Manual, Airhorn Plus 3 Traffic Advisor™ Switches and Microphone with Extension Cable		
5	1	C399K3	Whelen OBDII CANport™ Installation Kit for C399 for Ram Classic 1500, 2018-2020, Ram 1500, 2019-2024, Ram 2500/3500, 2021-2023, Dodge Charger, 2018-2022, and Dodge Durango, 2018-2024 (Not for use with Core-R™ and C399S)		
6	2	SA315	Whelen 100 Watt Speaker, Nylon Composite	\$0.00	\$0.00
7	2	SAK1	Whelen Heavy-Duty Universal "L" Mounting Bracket For SA315 Speaker		
8	1	CV2V	Whelen Vehicle To Vehicle Module, Includes Internal Antenna	\$241.43	\$241.43
9	1	CEM16	Whelen 16 Output, 4 Input WeCanX® Expansion Module	\$191.43	\$191.43
10	1	CEM24	Whelen 24 Output, 4 Input WeCanX® Expansion Module	\$251.43	\$251.43
11	1	PBCNTL	Whelen Control Module and Harness for Push Bumper, Lightheads Purchased Separately	\$433.11	\$433.11
12	4	I3MCM	Whelen ION Super-LED, TRIO, Blue/Amber/White, Steady with MIZU Connector, Black Housing	\$148.57	\$594.28
13	2	TS3MC	T-Series Linear Super-LED, TRIO, Blue/Amber/White, Steady with MIZU Connector	\$135.71	\$271.42
14	2	U180MCX	Whelen U-Series™ 180° Linear Super-LED® Surface Mount Round Lightheads, TRIO™, Blue/Amber/White, Individual Control of Each Color, Clear Lens	\$210.00	\$420.00
15	1	U18044	Whelen One Pair Under-the-Side View Mirror Mount for 2013-2024 Dodge Durango, for Two U-Series™ Lightheads (Purchased Separately)	\$22.00	\$22.00
16	2	TCRWX5	Whelen Tracer™ WeCanX® Running Board Lights Six-Lamp Housing, Requires Five Lightheads, "L" Bracket Mounting (Seven Required) or Vehicle-Specific Mounting, Purchased Separately	\$972.86	\$1,945.72

Line	Qty	Model Number	Description	Unit Price	Ext. Price
17	2	TCRB44	Whelen 2015-2025 Dodge Durango Running Board Mounting Kit for 5-Lamp Tracer™		
18	2	VX3BAC	VXE® Super-LED® Series Directional TRIO™ Lighthouse, Blue/Amber/White with Clear Lens, 12" Pigtails	\$108.57	\$217.14
19	2	VX2M	Whelen VXE® Super-LED® Series Directional DUO™ Lighthouse, Blue/Amber, Clear Lens, 12" Pigtails, (Remote Flasher Purchased Separately)	\$95.71	\$191.42
20	2	VX3RBC	Whelen VXE® Super-LED® Series Directional TRIO™ Lighthouse, Red/Blue/White, Clear Lens, 12" Pigtails, (Remote Flasher Purchased Separately)	\$108.57	\$217.14
21	1	BS44ZT	Whelen Inner Edge® RST™ WeCanX® Series For 2016-2025 Dodge Durango, TRIO™, Upper Rear Housing for Ten Lamp	\$1,261.43	\$1,261.43
22	2	TSS0JC	Whelen T-Series™ Linear Super-LED® Lighthoods, Surface Mount, TRIO™ Color, Linear Super-LED® Lighthouse, Clear Lens, Red/Blue/White	\$140.00	\$280.00
23	1	425-6706	Durango 2021+ DGS/Max Depth Contour Console (16" FP)	\$591.73	\$591.73
24	1	425-0029	Armrest, Tall Rear Mounted (Fits 425-6705 and 425-6706)	\$80.89	\$80.89
25	1	425-6729	4" Dual ABS Cup Holder (Internally Mounted)	\$51.50	\$51.50
26	1	425-6701	FP Assy, 2" Blank Faceplate w/USB A/USB C & 12v Outlets (2)	\$94.10	\$94.10
27	1	475-0965	Space Creator - High Security/High Visibility Window (includes Center HSEP ONLY)	\$928.47	\$928.47
28	1	475-8848	HSEP - 2P (VP9 Space Creator)	\$96.43	\$96.43
29	1	475-0822	Prisoner Cargo Barrier (CB4)	\$577.70	\$577.70
30	1	36-4075	Push Bumper Elite - Durango 2021-2024	\$483.23	\$483.23
31	1	36-6015W2	Elite 33.1" 2 Light Channel - Silverado 1500/LD 2014-2021; Silverado 1500 LTD 2022; Tahoe PPV 2015-2024; RAM 1500 SSV 2013-2018; 1500 SSV Classic 2019-2023; Expedition/SSV 2015-2017; F-150 SSV/Police Respond 2015-2024 (Excl. Lightning)(Push Bumper Light Channel 33.1 inch Whelen, 2 Hole)	\$45.13	\$45.13
32	1	36-4075PB	PIT Bar Elite - Durango 2021-2024	\$483.23	\$483.23
33	1	NMO-60-300-M1-A	PCTEL 25' RG-58 NMO Coax Assembly wit Mini UHF Connector Attached	\$29.00	\$29.00
34	1	BMLPV700	PCTEL BMLPV700 Maxrad 740 - 870 MHz low profile vertical 2 dB gain black antenna, 2.4 in high.	\$48.00	\$48.00
35	1	INSTALLKIT	Wire, Fuses, Loom, etc.	\$225.00	\$225.00
36	1	INSTALL	Installation	\$2,000.00	\$2,000.00
37	1	Shipping	Shipping	\$500.00	\$500.00
38			Kenwood Mobile Radio		
39	1	VM5930BF	Kenwood VM5930 700/800 Mobile Radio	\$2,248.00	\$2,248.00
40		KRK-14HV	Remote Mount Radio Rear Panel	\$154.40	\$154.40
41		KRK-17BF	Remote Mount for Control Head	\$136.00	\$136.00
42		8326000006	1024 Channel Capable		
43		8323000005	ARC4 Encryption (ADP Compatible)		
44		KCH-19VM	Single Control Head	\$192.80	\$192.80
45		8322000002	P25 Conventional	\$0.00	\$0.00
46		8322000005	P25 Phase I Digital Trunking	\$0.00	\$0.00
47		8322000006	P25 Phase II TDMA Operation	\$380.00	\$380.00
48		8326000028	Instant Recording Replay	\$96.00	\$96.00
49		8326000029	Voice Recording		
50		8325000003	GPS Operation	\$96.00	\$96.00
51		KRA-40GM	GPS Mobile Antenna	\$34.40	\$34.40
52		KMC-65M	Standard Microphone	\$55.68	\$55.68
53		KCT-23M	Standard DC Power Cable	\$42.00	\$42.00

Line	Qty	Model Number	Description	Unit Price	Ext. Price
54		KMB-33M	Standard Mounting Bracket	\$0.00	\$0.00
55		MSWINPRG	MSWIN Programming	\$35.00	\$35.00
56		INSTALL	Installation of Mobile Radios	\$150.00	\$150.00
					
SubTotal					\$19,368.35
Tax					\$0.00
Shipping					\$0.00
Total					\$19,368.35



Tate County Mississippi - Paragon

Thomas Nickels

gnickels@tatecountymms.gov
(662)501-7092

Reference: 20260226-150722426
Quote created: February 26, 2026
Quote expires: May 27, 2026

Garrett

1881 W. State Street

Garland, TX 75042
US

Prepared by: Michael Womack

"Direct Sales Representative"
michael.womack@garrett.com
+14693440344

Total **\$9,040.00**

Products & Services

ITEM AND DESCRIPTION	QUANTITY	SKU	LIST PRICE	PRICE PER UNIT	TOTAL LINE
Paragon Complete Kit ADA Compliant Includes: Paragon 32.5' ADA Caster Set Battery Module Transport Brace Paragon Remote Guide Hand Wand	1	1172011	\$10,800.00	\$8,640.00	\$8,640.00 after 20% discount
Guide Charging Base	1	1635400	\$80.00	\$0.00	\$0.00 after 100% discount

ITEM AND DESCRIPTION	QUANTITY	SKU	LIST PRICE	PRICE PER UNIT	TOTAL LINE
Freight - Walk-Through Metal Detector	1	Freight	\$400.00	\$400.00	\$400.00
<p>Freight price is based on delivery of walk-through metal detector(s) and accessories to a (single) location. Customer must have a loading dock and the ability to unload the trailer. If a lift gate or inside delivery is required, additional charges could apply.</p> <p>FOB Garland.</p>					
SUMMARY					
One-time subtotal				\$9,040.00 after \$2,240.00 discount	

Total	\$9,040.00
--------------	-------------------

Comments

Freight is based on delivery of walk-through metal detector(s) and accessories to a (single) location. Customer must have a loading dock and the ability to unload the trailer. If a lift gate or inside delivery is required, additional charges could apply.

FOB Garland.

If you wish to have Garrett personnel assemble and set-up the unit, we do charge a trip charge and assembly per unit.
 \$2500 Trip Charge
 \$400 per unit.

Purchase terms

Garrett's payment terms are Net 30 for customers with approved credit.

All orders will be subject to appropriate sales tax. Sales tax is determined when the order ships and will appear on the final invoice.

To establish a Net 30 account or to have sales tax waived this form must be submitted prior to the order shipping:
[New Account Information Sheet](#)

Orders under \$1000 must be prepaid via credit card or ACH. If mailing a payment please reference the quote number.

All sales are pursuant to [Garrett Terms and Conditions](#)

International Freight Estimates are Subject to Change:

The freight estimate is based on transportation, customs duties, tariffs, taxes, and other third-party fees prevailing on the date of this document. It is not a guaranteed fixed price. We reserve the right to adjust the final invoice amount to reflect any new, increased, or changed duties, tariffs, or taxes levied by government authorities between the date of this estimate and the date of product delivery. Transportation estimates are valid for 15 days from the date of this document.



info@sur-tec.com
800.755.2088
www.sur-tec.com

QUOTE

BILL TO

Tate County, MS - SO

QUOTE #: 70202

ISSUED: Nov 16, 2025

EXPIRES: Feb 14, 2026

ITEM & DESCRIPTION	SUBTOTAL
Casper 3X 12 Month term for 3 Casper connections.	\$2,963.00
TOTAL AMOUNT DUE	\$2,963.00

***Please note our address has changed, please make sure all remittance goes to the address below and update it in your systems.**

PAYMENT OPTIONS

Mail:
Sur-Tec, Inc.
P.O. Box 861022
Shawnee, KS 66286

ACH/EFT:
Contact SUR TEC to obtain
account information.

Credit Card:
Visa, Mastercard, AMEX

PROCUREMENT DOCUMENTATION

SUR TEC W-9 https://dl.sur-tec.com/SURTEC_W9
Sole Source Document <https://dl.sur-tec.com/solesource>
Core Company Data <https://dl.sur-tec.com/companvdata>

Billing Address:
 TATE COUNTY
 1 JUSTICE DRIVE
 SENATOBIA, MS 38668
 US

Quote Date:01/05/2026
 Expiration Date:03/06/2026
 Quote Created By:
 Leslie Houston
 Territory Account Manager
 leslie.houston@iciwireless.com
 6626096686

End Customer:
 TATE COUNTY
 Jacob Red
 jred@tatecountymys.gov
 662-612-0727

Contract: 21726 - MISSISSIPPI-MSWIN
 AGREEMENT: STATE OF MISSISSIPPI
 Payment Terms:30 NET

Summary:

Any sales transaction resulting from Motorola's quote is based on and subject to the applicable Motorola Standard Terms and Conditions, notwithstanding terms and conditions on purchase orders or other Customer ordering documents. Motorola Standard Terms and Conditions are found at www.motorolasolutions.com/product-terms.

Line #	Item Number	Description	Qty	List Price	Sale Price	Ext. Sale Price
	APX™ 900	APX 900 7/800 MHZ MODEL 2 PORTABLE	10		\$1,733.41	\$17,334.10
1	H92UCF9PW6AN	PORTABLE RADIO APX 900 7/800 MHZ MODEL 2				
1a	QA01648AA	ADD: HW KEY SUPPLEMENTAL DATA				
1b	Q698AA	ADD: 2.5 INCH BELT CLIP				
1c	Q667BB	ADD: ADP ONLY (NON-P25 CAP COMPLIANT) (US ONLY)				
1d	QA04096AA	SOFTWARE LICENSE ENH: P25 TRUNKING				
1e	QA00580AF	ADD: TDMA OPERATION				
1f	QA09113AB	ADD: BASELINE RELEASE SW				
1g	H885BK	ADD: 3Y ESSENTIAL SERVICE				
2	PMNN4493A	PORTABLE RADIO BATTERY IMPRES LI-ION IP68 3000T				
3	PMPN4284B	CHARGER, DESKTOP MULTI UNIT 6 IMPRES, RAPID, US/NA	1	\$756.92	\$643.38	\$643.38



Any sales transaction following Motorola's quote is based on and subject to the terms and conditions of the valid and executed written contract between Customer and Motorola (the "Underlying Agreement") that authorizes Customer to purchase equipment and/or services or license software (collectively "Products"). If no Underlying Agreement exists between Motorola and Customer, then Motorola's Standard Terms of Use and Motorola's Standard Terms and Conditions of Sales and Supply shall govern the purchase of the Products.
 Motorola Solutions, Inc.: 500 West Monroe, United States - 60661 ~ #: 36-1115800



Line #	Item Number	Description	Qty	List Price	Sale Price	Ext. Sale Price
4	PMPN4576A	CHARGER, DESKTOP SINGLE UNIT IMPRES, US/CAN PLUG	3	\$87.83	\$74.66	\$223.98
5	PMMN4069AL	PORTABLE RSM GCAL, IP55, 3.5MM JACK, LARGE	10	\$153.69	\$130.64	\$1,306.40

Grand Total

\$19,507.86(USD)





Line #	Item Number	Parametric Data
1a	QA01648AA	ASKHOMID = 02AD





Purchase Order Checklist NA OM

Marked as PO/ Contract/ Notice to Proceed on Company Letterhead (PO will not be processed without this)
PO Number/ Contract Number
PO Date
Vendor = Motorola Solutions, Inc.
Payment (Billing) Terms/ State Contract Number
Bill-To Name on PO must be equal to the <i>Legal</i> Bill-To Name
Bill-To Address
Ship-To Address (If we are shipping to a MR location, it must be documented on PO)
Ultimate Address (If the Ship-To address is the MR location then the Ultimate Destination address must be documented on PO)
PO Amount must be equal to or greater than Order Total
Non-Editable Format (Word/ Excel templates cannot be accepted)
Tax Exemption Status
Signatures (As required)

NOTE: When an email order is submitted a confirmation is sent from Motorola AutoNotify referencing a case number.

Once checklist is complete, order still must go through **Order Validation/Credit Approval**

Remit To:
 EEP
 PO BOX 1739
 Southaven, MS. 38671
 PH: (662) 280-4729
 Fax:(662) 342-7251



QUOTE
227480

CUSTOMER NO.
 15025

BILL TO:

Tate Co Sheriffs Dept
 1 Justice Drive
 Senatobia, MS 38668

SHIP TO:

Tate Co Sheriffs Dept
 1 Justice Drive
 Senatobia, MS 38668

PHONE: 662/562-4434

Visit our website at www.emergencyequipment.us

PAGE 1

FAX:

DATE		SHIP VIA		F.O.B.		TERMS			
02/26/26		OUR TRUCK				NET 30 DAYS			
PURCHASE ORDER NUMBER			ORDER DATE		SALESPERSON		OUR QUOTE NUMBER		
UNIFORMS			02/26/26		HMS CR		227480		
QUANTITY		ITEM NUMBER		DESCRIPTION		UNIT PRICE	AMOUNT		
REQUIRED	SHIPPED								
1		BLR.8670-45-18-35		LS SILVER TAN POLY SUPERSHIRT		92.00	92.00		
1		BLR.8674-28-34R		FLEXPRO CLASSIC PANT		85.00	85.00		
1		BLR.8361-45-2XL-37		LS TAN FLEXRS ARMRSKIN BASE SH		84.00	84.00		
1		BLR.8362-45-2XLR		SLVTAN FLEXRS ARMRSKIN BASE SS		78.00	78.00		
1		511.74434-192-32-34		APEX PANTS - TUNDRA		72.00	72.00		
1		SBU.90019-BLACK		TIE CLIP-ON POLY 3X20IN BLACK		7.00	7.00		
1		RCK.2090-10		ROCKY 2090 JUMP BOOT SZ 10IN		138.00	138.00		
50		@MIS		FLEX BADGES W/VELCRO		45.00	2,250.00		
<p>Please note: Invoices paid by Credit Card will have a 3% fee added to the Total Quote Amount shown below</p> <p>Pricing quotes are estimates only. Due to volatility in material cost, pricing, surcharges, etc., orders will not be accepted until pricing is verified from the vendor. Both the purchaser and Emergency Equipment Professionals, Inc. will approve final pricing before the order is finalized.</p> <p>If the supplier to EEP modifies prices after the order has been submitted, the customer will have the right to cancel without penalty.</p>									
Product Total		Discount		Freight		Taxable Amount	Tax	Misc. Amt.	QUOTATION TOTAL
2,806.00		0.00				2,806.00	0.00		2,806.00

Terms and Conditions: Interest will be charged at the rate of 1 1/2% per month, or 18% annually on any unpaid balance. Customer agrees to pay reasonable attorney's fee and all other costs of collection after default. All orders received "As Ordered" and returned are subject to a 20% restocking fee. No returns are allowed without prior written approval from Emergency Equipment Professionals. All shortages and discrepancies must be reported to Emergency Equipment Professionals within 10 days of receipt of shipment. No cash refunds will be given.

Remit To:

EEP
 PO BOX 1739
 Southaven, MS. 38671
 PH: (662) 280-4729
 Fax:(662) 342-7251



**QUOTE
 227479**

CUSTOMER NO.
 15025

BILL TO:

SHIP TO:

Tate Co Sheriffs Dept
 1 Justice Drive
 Senatobia, MS 38668

Tate Co Sheriffs Dept
 1 Justice Drive
 Senatobia, MS 38668

PHONE: 662/562-4434

Visit our website at www.emergencyequipment.us

PAGE 1

FAX:

DATE		SHIP VIA		F.O.B.		TERMS	
02/26/26		OUR TRUCK				NET 30 DAYS	
PURCHASE ORDER NUMBER			ORDER DATE		SALESPERSON		OUR QUOTE NUMBER
			02/26/26		HMS CR		227479
QUANTITY		ITEM NUMBER	DESCRIPTION	UNIT PRICE	AMOUNT		
REQUIRED	SHIPPED						
1		KOR.D1-DBW	2.25" BW COMPLETE DUTY BELT D1	135.00	135.00		
1		SLT.75813	Stinger DS LED Flashlight "With 120V/100V AC/12V DC Charger, 2 Holders "	175.00	175.00		
1		SLT.69260	Streamlight TLR-1 HL Gun Light Includes Rail Locating Keys and lithium batteries - Box	215.00	215.00		
1		KRO.56060	ASP STEEL CHAIN ULTRA PLUS CUF	102.00	102.00		
1		KRO.7934	BIANCHI OPEN HANDCUFF CASE BSK	38.00	38.00		
1		KRO.BI-22091	BLK BSKWEAVE HIDDEN BELT KEEPE	23.00	23.00		
1		HSG.41MAC0-BLK	RADIO HOLDER- MULTI COMM TACO	55.00	55.00		
1		HSG.11DC00-BLK	HANDCUFF TACO-MOLLE	42.00	42.00		
1		HSG.41PT02-BLK	DOUBLE DUTY PISTOL TACO MAG HO	55.00	55.00		
1		KRO.22705	BIANCHI ACCUMOLD ADJ RADIO HOL ADJUSTABLE BASKETWEAVE RADIO HOLDER	49.00	49.00		
1		KRO.77-83-4-3HS	MOD 77 DBL MAG PCH GLK 17-22	51.00	51.00		
1		SAF.22966	MODEL 7934 OPEN HANDCUFF CASE BASKETWEAVE	38.00	38.00		
<p>Please note: Invoices paid by Credit Card will have a 3% fee added to the Total Quote Amount shown below</p> <p>Pricing quotes are estimates only. Due to volatility in material cost, pricing, surcharges, etc., orders will not be accepted until pricing is verified from the vendor. Both the purchaser and Emergency Equipment Professionals,</p>							
Product Total		Discount	Freight	Taxable Amount	Tax	Misc. Amt.	QUOTATION TOTAL

Terms and Conditions: Interest will be charged at the rate of 1 1/2% per month, or 18% annually on any unpaid balance. Customer agrees to pay reasonable attorney's fee and all other costs of collection after default. All orders received "As Ordered" and returned are subject to a 20% restocking fee. No returns are allowed without prior written approval from Emergency Equipment Professionals. All shortages and discrepancies must be reported to Emergency Equipment Professionals within 10 days of receipt of shipment. No cash refunds will be given.

Remit To:

EEP
 PO BOX 1739
 Southaven, MS. 38671
 PH: (662) 280-4729
 Fax:(662) 342-7251



QUOTE
227479

CUSTOMER NO.
 15025

BILL TO:

Tate Co Sheriffs Dept
 1 Justice Drive
 Senatobia, MS 38668

SHIP TO:

Tate Co Sheriffs Dept
 1 Justice Drive
 Senatobia, MS 38668

PHONE: 662/562-4434

Visit our website at www.emergencyequipment.us

PAGE 2

FAX:

DATE		SHIP VIA	F.O.B.	TERMS			
02/26/26		OUR TRUCK		NET 30 DAYS			
PURCHASE ORDER NUMBER		ORDER DATE	SALESPERSON		OUR QUOTE NUMBER		
		02/26/26	HMS CR		227479		
QUANTITY		ITEM NUMBER	DESCRIPTION	UNIT PRICE	AMOUNT		
REQUIRED	SHIPPED						
Inc. will approve final pricing before the order is finalized. If the supplier to EEP modifies prices after the order has been submitted, the customer will have the right to cancel without penalty.							
Product Total		Discount	Freight	Taxable Amount	Tax	Misc. Amt.	QUOTATION TOTAL
978.00		0.00		978.00	0.00		978.00
Terms and Conditions: Interest will be charged at the rate of 1 1/2% per month, or 18% annually on any unpaid balance. Customer agrees to pay reasonable attorney's fee and all other costs of collection after default. All orders received "As Ordered" and returned are subject to a 20% restocking fee. No returns are allowed without prior written approval from Emergency Equipment Professionals. All shortages and discrepancies must be reported to Emergency Equipment Professionals within 10 days of receipt of shipment. No cash refunds will be given.							

Remit To:
 EEP
 PO BOX 1739
 Southaven, MS. 38671
 PH: (662) 280-4729
 Fax:(662) 342-7251



**QUOTE
227478**

CUSTOMER NO.
15025

BILL TO:

Tate Co Sheriffs Dept
 1 Justice Drive
 Senatobia, MS 38668

SHIP TO:

Tate Co Sheriffs Dept
 1 Justice Drive
 Senatobia, MS 38668

PHONE: 662/562-4434

Visit our website at www.emergencyequipment.us

PAGE 1

FAX:

DATE		SHIP VIA		F.O.B.		TERMS	
02/26/26		OUR TRUCK				NET 30 DAYS	
PURCHASE ORDER NUMBER		ORDER DATE		SALESPERSON		OUR QUOTE NUMBER	
BODY ARMOR		02/26/26		HMS CR		227478	
QUANTITY		ITEM NUMBER	DESCRIPTION	UNIT PRICE	AMOUNT		
REQUIRED	SHIPPED						
1		PBE.BII-BLACK	PB HILITE LEVEL II ARMOR	700.00	700.00		
1		PBE.GDC_00BV0J-SVTAN	GUARDIAN GEN 3 CARRIER PDF ATT	350.00	350.00		
<p>Please note: Invoices paid by Credit Card will have a 3% fee added to the Total Quote Amount shown below</p> <p>Pricing quotes are estimates only. Due to volatility in material cost, pricing, surcharges, etc., orders will not be accepted until pricing is verified from the vendor. Both the purchaser and Emergency Equipment Professionals, Inc. will approve final pricing before the order is finalized.</p> <p>If the supplier to EEP modifies prices after the order has been submitted, the customer will have the right to cancel without penalty.</p>							
Product Total		Discount	Freight	Taxable Amount	Tax	Misc. Amt.	QUOTATION TOTAL
1,050.00		0.00		1,050.00	0.00		1,050.00
<p>Terms and Conditions: Interest will be charged at the rate of 1 1/2% per month, or 18% annually on any unpaid balance. Customer agrees to pay reasonable attorney's fee and all other costs of collection after default. All orders received "As Ordered" and returned are subject to a 20% restocking fee. No returns are allowed without prior written approval from Emergency Equipment Professionals. All shortages and discrepancies must be reported to Emergency Equipment Professionals within 10 days of receipt of shipment. No cash refunds will be given.</p>							



Pen-Link, Ltd.
 3400 Plantation Drive, Suite 200
 Lincoln, NE 68516
 United States

Quote Information

Prepared By	Alex Bellefleur	Quote Number	00061238
Created Date	2/27/2026	Payment Terms	Net 30
Expiration Date	5/28/2026	Freight Terms	FOB Origin
		Term Length	12

Address Information

Bill To:

Tate County Sheriff's Office (MS)
 1 Justice Drive
 Senatobia, Mississippi 38668
 United States

Ship To:

Tate County Sheriff's Office (MS)
 Mississippi
 United States

Products & Services

Product	Quantity	Sales Price	Discount Each	Total Price
Tangles Bronze Suite	1.00	USD 0.00		USD 0.00
Tangles - Bronze	1.00	USD 60,000.00	0.00	USD 60,000.00
Additional Named User	10.00	USD 0.00		USD 0.00
PenLink Academy Tangles Training Subscription	1.00	USD 6,000.00	0.00	USD 6,000.00
Annual Tangles Training Subscription - Free In-Person Class	1.00	USD 0.00		USD 0.00
Annual Tangles Training Subscription - Free Summit Conference Seat	2.00	USD 0.00		USD 0.00

Totals

Subtotal	USD 66,000.00
Discount	USD 0.00
Net Subtotal	USD 66,000.00
Tax	USD 0.00
Total price	USD 66,000.00

Additional Notes (if applicable)

Pen-Link, Ltd. DUNS: 195956636 / TIN: 47-0707585 / CAGE: 0K6H9

This document contains confidential and proprietary information and is the copyrighted property of Pen-Link, Ltd and its Subsidiaries. Distribution of this document within the receiving agency or company is permitted, but only to such personnel as may be required to meet the goals of the project for which this document was provided. Recipients of this document may not reproduce it, in part or in whole, in any form, or convey its contents to external agencies by any means, without the express written consent of Pen-Link, Ltd or one of its Subsidiaries. This document may not be distributed, in part or in whole, in any form, to any commercial, non-government entity.

TERMS AND CONDITIONS:

<https://www.penlink.com/terms-of-service/>

KIRK AUTO GROUP

GRENADA, MS

COMMERCIAL SALES DEPT

2026 CHRYSLER PACIFICA

Pacifica select

3.6l v6

8 PASSENGER SEATING

CRUISE CONTROL

PRISONE CAGE AND WINDOW BARS

REMOTE KEYLESS ENTRY

TOTAL PRICE

\$ 44,900.00

CALL OR SEE: **WES HERRING**
601-503-4534

COMMERCIAL SALES DEPARTMENT

QUOTE



The Southern Connection Police Supplies
274 Commerce Park Dr, Suite M
Ridgeland, MS 39157
tscps@bellsouth.net
(601) 853-3106

Bill To: TATE COUNTY SHERIFF
TATE COUNTY SHERIFF
1 JUSTICE DR
SENATOBIA, MS 38668
gwelch@tatecountysheriff.com

Order Status: Open
NICKMONIGOLD
Workstation: 0

INSTRUCTIONS: Major Gray Nickels
CID, SID, Courts and Fugitive Division
Tate County Sheriff's Office
Cell: 662-501-7092
Office: 662-562-4434
GNICKELS@TATECOUNTYMS.GOV

- DEAD AIR SUPPRESSOR
- SIM ROUND BOLTS FOR GLOCK AND PWS
- 40 MIC LAUNCHER AND GAS CANISTERS

Item Name	Attribute	Size	Qty	Price	Ext Price	Lookup	Item #
PWS MK111DI RIFLE	5.56	11"	1	\$1,089.40	\$1,089.40	MK111DI	47460
Trigger: Mil-Spec enhanced PTFE coated, Pull Weight 5.5 lbs • Ships with one 30 round Lancer Magazine • Upper Receiver: PWS Direct Impingement, T6 7075 Forged, hard coat anodized, with Magpul MBUS flip-up sights and A2 Flash Hider • Lower Receiver: PWS MK1 MOD 1 Multi-Caliber Lower, T6 7075 Forged, Anodized, AR-15 Compatible with Ambidextrous Safety Selector							
GLOCK PERFORMANCE TRIGGER UPG			1	\$35.00	\$35.00		57462
SIG ROMEO 5 GEN II	RED DOT		1	\$199.99	\$199.99	SOR5101	56407
Adaptability meets precision with the n ROMEO5 GEN II optic. Refreshed from the ground up, the ROMEO5 GEN II combines a sleek new look with unparalleled functionality that has been optimized for MSR rifle platforms. The ROMEO5 GEN II maintains adaptability with an analog rotary illumination dial to manipulate 12 individual brightness settings, including two dedicated night vision options. Featuring an I-BEAM Mount for maximizing situational awareness, the ROMEO5 GEN II allows for a convenient co-witness while still maintaining ultimate durability. Engineered for discerning shooters seeking uncompromising quality, durability, and adaptability in their optics, the ROMEO5 GEN II was designed to exceed expectations.							
AIMPOINT DUTY RDS			1	\$499.00	\$499.00	200759	57479
Duty RDS (2MOA, One-Piece Torsion Nut Mount, 39mm)							
AIMPOINT PRO PATROL RIFLE OPTIC			1	\$497.00	\$497.00	12841	21025
GLOCK 45 WITH COA REDDOT		9MM	1	\$777.00	\$777.00	UA455SB02MOS8A	56250
GLOCK 45 WITH COA AIMPOINT REDDOT MOUNTED							
SAFARILAND ALS/SLS RED DOT SIGH		RIGHT PL G19 TLR1	1	\$189.99	\$189.99	6360RDS-2832-411	36556
Model 6360RDS ALS/SLS Mid-Ride, Level III Retention Duty Holster FOR RED DOT SIGHTS							
DEAD AIR LAZARUS 6	XENO	BLK	1	\$750.00	\$750.00	LZ6XNBLK	56788
GLOCK 45T MOS GEN5	FXD		1	\$454.00	\$454.00	GLOCK 45T MOS	43514
UTM WEAPON CONVERSION KIT	MMR/BLN	AR-15/5.56	1	\$410.00	\$410.00	01-3910	35572
CTS 40MM LIQUID PEN CS			1	\$38.25	\$38.25	403131-1	60150
CTS 40MM OC LIQUID BARRICADE	4330		1	\$38.45	\$38.45	403141-1	61484
	4340	LONG	1	\$38.45	\$38.45	403141-1	61484
Penn Arms L140-3			1	\$1,646.90	\$1,646.90	400163	60146
SINGLE-LAUNCHER COLLAPSING STOCK COMBO RAIL (GL-140)							

Printed: 2/27/2026 10:07:34 AM
Store: 1

QUOTE

Sales Order #10555A
Quoted: 7/17/2025
Page 2

Printed: 2/27/2026 10:07:34 AM
Store: 1

QUOTE

Sales Order #10555A

Quoted: 7/17/2025

Page 3

Total Qty Ordered: 13 0 13

Percent Unfilled: 100

	Subtotal:	\$6,624.98
Exempt	0 % Tax:	+ \$0.00
	TOTAL:	\$6,624.98
	Deposit Balance:	\$0.00
	Balance Due:	\$6,624.98

THIS QUOTE EXPIRES IN 30 DAYS

[Q \(/search.aspx\)](/search.aspx)

[\(tel:570-368-3920\)](tel:570-368-3920)

[✉ \(/contactus.aspx\)](/contactus.aspx)



[\(/MyAccount Orders.asp\)](/MyAccount Orders.asp)

🛒 SHOPPING CART - 4 ITEMS



NIGHTFORCE ATACR 5-25X56 F1 ZS .1MRAD ILLUM PTL MIL-C C579
C579-NF

\$3,300.00 4

\$13,200.00

[Continue Shopping](#)

Add a Promotional Code:

Submit

Sub Total:

\$13,200.00

Free Shipping - Orders over \$500.00 in the continental US [\[Close\]](#):

\$0.00

Select Shipping Method

\$0.00 - Free Shipping - Orders over \$500.00 in the continental US

\$42.20 - USPS Priority Mail

[View Shipping Policy](#)

Shipping Address

Country

United States

State

MS

Postal Code

38668

Get Rates

Cancel

Tax:

\$924.00

Total:

\$14,124.00

Make any changes to the products in your cart?
Click [Update](#) to refresh your total.

Update



H-S PRECISION



Custom Order Lead Time

All Rifles (unless otherwise noted) are made to order custom items with extended lead times.

Rifle Estimated Lead Time: 6 months

Product	Price	Quantity	Subtotal
---------	-------	----------	----------

HTR - Heavy Tactical Precision Rifle

SELECT STOCK COLOR: Woodland Camo

SELECT CERAKOTE COLOR: Olive TRIGGER:

TriggerTech Primary Flat HAND: Right Hand ACTION:

X Long Action CALIBER: 308 Winchester BARREL LENGTH: 24"

\$5,820.00

-	4	+
---	---	---

\$23,379.00

Extra Magazine Box(es): 1 (+ \$99.00) Muzzle Configuration:

Muzzle Brake (H-Brake Permanent) Bipods:

Atlas Bipod (Standard) - Pic Rail Required



Product

Price

Quantity

Subtotal

Apply coupon

Update cart

Subtotal

\$23,379.00

Shipping

Calculate shipping

Tax

\$0.00

Gift card

Apply gift card

Total

\$23,379.00

Proceed to Checkout





SureFire, LLC
 18300 Mount Baldy Circle, Fountain Valley, CA92708-6122 USA
 714-545-9444 Fax: 714-545-9537
 800-828-8809
 www.surefire.com

Print date: 7/14/2025 4:24:33PM

Page: 1 of 1

Sales Order: 6829171

Sales Order Acknowledgement

Sold To: TATE COUNTY SHERIFF 1 JUSTICE DR SENATOBIA, MS 38668 USA	Ship To: TATE COUNTY SHERIFF 1 JUSTICE DR SENATOBIA MS 38668 USA
Email: mWilson@tatecountymys.gov	

Cust ID: 1532724	PO Number: 019062	FOB: Fountain Valley
Terms: NET 30	Ship Via: UPS GROUND	Sales Rep: House - House Account
Order Date: 7/14/2025	Need By: 7/14/2025	Ship By: 7/15/2025
DNSB:	DNSA:	Ship Complete: No
	Reviewed By: _____	

ORDERED VIA EMAIL BY: Matt Wilson <mWilson@tatecountymys.gov>

BASED ON QUOTE# 21268

NC FREIGHT / FREIGHT ON ORDER

Line	Order Qty	Part Number/Description	Unit Price	Ext. Price	Discount	Total Price
1	12	UE-BK REPLACEMENT REAR CAP ASSY FOR SCOUTLIGHT SERIES, BK, SWITCH CABLE NOT INCLUDED	63.20	758.40		758.40
						Ship By: 7/15/2025

Sale Amount: 758.40
 Total Tax: 0.00

Freight 15.00

Order Total 773.40 USD

Sales Tax will be included on final invoice if applicable. Customer shall be solely responsible for the payment of any and all Taxes imposed on orders of Product or other fees, including reimbursement to SureFire for any Taxes paid on Customer's behalf. If exempt from taxation, Customer shall furnish SureFire with a valid tax exemption certificate PRIOR to shipment.

CANCELLATION OF SUPPRESSORS POLICY

There is a 15% processing fee for cancellations of suppressor orders. Fee is based on the total cancellation value.

ALL RETURNS SUBJECT TO A RESTOCKING FEE



SureFire, LLC
 18300 Mount Baldy Circle, Fountain Valley, CA92708-6122 USA
 714-545-9444 Fax: 714-545-9537
 800-828-8809
 www.surefire.com

Print date: 7/14/2025 4:20:00PM
 Page: 1 of 1

Sales Order: 6829170

Sales Order Acknowledgement

Sold To: TATE COUNTY SHERIFF 1 JUSTICE DR SENATOBIA, MS 38668 USA	Ship To: TATE COUNTY SHERIFF 1 JUSTICE DR SENATOBIA MS 38668 USA
Email: mWilson@tatecountyms.gov	

Cust ID: 1532724	PO Number: 019053	FOB: Fountain Valley
Terms: NET 30	Ship Via: UPS GROUND	Sales Rep: House - House Account
Order Date: 7/14/2025	Need By: 7/14/2025	Ship By: 7/15/2025
DNSB:	DNSA:	Ship Complete: No
	Reviewed By:	

ORDERED VIA EMAIL BY: Matt Wilson <mWilson@tatecountyms.gov>

BASED ON QUOTE# 21224

NC FREIGHT / FREIGHT ON ORDER

Line	Order Qty	Part Number/Description	Unit Price	Ext. Price	Discount	Total Price
1	12	M640DFT-BK-PRO SCOUT LIGHT, TURBO, SWIVEL, 18650/123, 1913 PICATINNY MOUNT INSTALLED, MLOK MOUNT INCLUDED, BLACK, Z68 CLICK ON/OFF TAILCAP	327.20	3,926.40		3,926.40 Ship By: 7/15/2025
2	12	CSP-07 COMPACT REMOTE SWITCH, PICCATINNY RAIL GRABBER, 7"	76.00	912.00		912.00 Ship By: 7/15/2025
Sale Amount:						4,838.40
Total Tax:						0.00
Freight						35.00
Order Total						4,873.40 USD

Sales Tax will be included on final invoice if applicable. Customer shall be solely responsible for the payment of any and all Taxes imposed on orders of Product or other fees, including reimbursement to SureFire for any Taxes paid on Customer's behalf. If exempt from taxation, Customer shall furnish SureFire with a valid tax exemption certificate PRIOR to shipment.

CANCELLATION OF SUPPRESSORS POLICY
 There is a 15% processing fee for cancellations of suppressor orders. Fee is based on the total cancellation value.

ALL RETURNS SUBJECT TO A RESTOCKING FEE

L3harris GPNVGC - Ground Panoramic Night Vision Google - 12565 LP: 72/81/81/81 SNR: 34.3/36.6/34.3/37.6 EBI: 0.5/1.3/0.4/1.0 HALO: 0.78/0.63/0.67/0.63 FOM: 2469.6/2964.6/2778.3/3045.6 \$49,999.98

12

Total: \$599,999.76

PRODUCT



L3HARRIS GPNVGC - GROUND PANORAMIC NIGHT VISION GOOGLE - 12565 LP: 72/81/81/81 SNR: 34.3/36.6/34.3/37.6 EBI: 0.5/1.3/0.4/1.0 HALO: 0.78/0.63/0.67/0.63 FOM: 2469.6/2964.6/2778.3/3045.6

\$49,999.98

12

\$599,999.76

SUBTOTAL



You may be interested in...



MODORUM™ SHARPS GPWG
WRAP
\$79.98



TEAM MEMBER EXPL. LP BUMP
NETSET
\$520.98



CART TOTALS

Subtotal **\$599,999.76**

Shipment Shipping Costs Are Calculated During
1 Checkout.

Tax **\$0.00**

Coupon

Apply coupon

Total **\$599,999.76**

Update cart

Proceed to checkout





Tate County Sheriff's Office- MS - Recce360 Mini

Quote created: February 27, 2026 Reference: 20260227-102238143

Tate County Sheriff's Office- MS
Senatobia, MS 38668

Jim Herman
wdickson@tatecountymms.gov
662-403-1529

Comments

Nicole Richmond - Business Development Manager Bounce Imaging

Products & Services

Bounce Imaging Explorer Recce360 Mini MK II Kit	1x \$6,955.00
Defense specific version of our Explorer Mini series camera. Enhanced for military end users (internal wifi booster, additional encryption, increased waterproofing). Kit includes custom pole w/pole mount, 100-lbs magnet, wall charger, and tether attachments.	

One-time subtotal	\$6,955.00
Total	\$6,955.00

This quote expires on May 28, 2026

Purchase terms

Questions? Contact me



Nicole Richmond

Business Development Manager
nicole.lauricella@bounceimaging.com
716-217-6629

Bounce Imaging

247 Cayuga Rd. Suite 15E
Cheektowaga, NY 14225
United States



Bounce Imaging ↔
247 Cayuga St, Suite 15E · Cheektowaga, NY 14225
sales@bounceimaging.com

Bounce Imaging Explorer 3.0 4G UNLEASHED Kit - Adds an additional 4G-LTE modem inside the camera, granting it effectively unlimited range when in reach of a cell phone tower. Kit includes one year of cloud service (below) for encrypting and relaying the feed to any viewers with authorized access anywhere in the world. 4G-LTE modem requires SIM activation and service via Verizon or directly from Bounce Imaging. Kit includes custom pole w/pole mount, 100-lbs magnet, wall charger, and tether attachment.

\$6,750.00

Cloud-sharing service - YEARLY CHARGE PER ACTIVATED DEVICE - The secure, end-to-end encrypted cloud relay system that powers the Unleashed camera variant when operating over 4G-LTE. When activated by an authorized user, allows a 4G-LTE camera to transmit its video (when in cellular range) to authorized users anywhere in the world, and to (optionally) store an encrypted version of that video for later download. 100GB/transfers per month + 500GB of cloud storage. DOES NOT include 4G/cellular data, which can be provided domestically by Verizon or directly through Bounce Imaging. **\$750.00**

Bounce Imaging Under Door Camera - *NEW ITEM AVAILABLE TO SHIP Q3-Q4*: World's thinnest tactical under door camera. Provides a wide-angle view, utilizing the smallest of openings under a door.

\$6,950.00

Bounce Imaging Explorer Recce 360 Mini MK2 Kit - Defense specific version of our Explorer mini-series camera. Enhanced for military end users (internal Wi-Fi booster, additional encryption, increased waterproofing). The kit includes a custom pole w/pole mount, 100-lbs magnet, wall charger, and tether attachments.

\$6,955.00

Bounce Imaging Explorer Recce 360 Mini Mark 3 Kit - *NEW ITEM AVAILABLE TO SHIP Q3-Q4*: Defense specific version of our Explorer mini-series camera. Enhanced for military end

users (internal Wi-Fi booster, additional encryption, increased waterproofing). The kit includes a custom pole w/pole mount, 100-lbs magnet, wall charger, and tether attachments. Mini Mk III is upgraded with new features including a rugged hardline connector for external communication, and IP67 rating.

\$7,500.00

Copperhead Thermal Pole Camera- *NEW ITEM AVAILABLE TO SHIP Q3-Q4*: Bounce Imaging's new Copperhead thermal pole camera provides a 360-degree horizontal field of view. Four thermal imagers are seamlessly stitched together to provide a 360 panorama that allows for operators to identify heat sources at any direction from the camera.

\$12,610.00

Hostage Negotiator Kit - Kit designed to support hostage negotiation teams and situations. Kit includes two Bounce Explorer Unleashed 4G 4.0 Kits, a ruggedized tablet for utilizing camera systems, external portable battery power supply, headphones, tablet, and hard sided case with custom foam. Includes everything needed to ensure support for camera systems during prolonged standoffs.

\$13,900.00

Bounce Imaging Pit Viper 360 Kit - *NEW ITEM AVAILABLE TO SHIP Q3-Q4*: World's first throwable 360-degree thermal camera system. Utilized six thermal modules to create a fully stitched, stabilized, pan able thermal image. Ideal for mission sets that may encounter zero illumination areas (tunnels, buildings, etc.) or environments with visual obscurants (smoke, dust, etc.). Equipped with ruggedized external connector for data transmission. Includes 100-lbs magnet, wall charger, custom pole/with mount, and tether attachments.

\$15,945.00

SWAT Kit - Camera kit bundle packaged with SWAT mission in mind. Kit includes 1 x Bounce Explorer Unleashed 4G 4.0 Kit, 1x Copperhead 360-degree field of view, thermal pole camera, and 1x tablet. Kit includes hard sided case with custom foam insert. Kit includes everything needed to execute SWAT mission set while increasing situational awareness and improving officer safety.

\$19,200.00

Pole Camera Kit - Camera kit bundle packaged with Bounce Imaging's latest pole camera technology. Kit includes 1 x Copperhead 360-degree field of view, thermal pole camera. Camera includes both 4 x thermal imagers and 1 x visual spectrum imager, as well as

charger and extendable pole. Kit also includes Bounce Imaging's Under Door camera, which is the world thinnest tactical under door camera, and includes multiple imagers for wide angle visibility. Pole camera kit includes chargers, tablet, and carrying case.

\$19,600.00

Surveillance Hardline Kit - Kit designed with surveillance in mind. Kit includes 2 x Bounce Imaging Recce 360 Mini Mk III cameras capable of hard line connection to phone/tablet. Everything needed for fiber optic connection is included (2 x 100m Rugged Tactical Fiber Optic Cable with Reel, 2 x Rugged Connector to Fiber Optic Adapter Cable, and 2 x ruggedized tablet). Kit includes hard sided case.

\$20,200.00

Inspection Kit - Camera kit bundle packaged with everything needed to accomplish your inspection mission set. Kit includes the 1 x Bounce Imaging Recce 360 Mini MkIII camera system, which is compatible with a hardline fiber optic connection. A hardline fiber optic connection allows for uninterrupted viewing of the camera feed regardless of physical environment. Kit includes tactical fiber optic reel and adapter. Kit also includes 1 x Copperhead 360-degree field of view, thermal pole camera. Camera includes both 4 x thermal imagers and 1 x visual spectrum imager, as well as charger and extendable pole. Tablet, camera chargers, accessories, and hard sided carrying case are also included.

\$22,200.00

SWAT Gold Kit - Ultimate Camera kit bundle packaged with SWAT mission in mind. Bundle comes with 1x Bounce Explorer Unleashed 4G 4.0 Kit, 1x Recce 360 Mini Mk II camera systems, 1x large tablet for utilizing camera, 1x Copperhead 360-degree field of view, thermal pole camera, and hard sided case with custom foam insert.

\$25,800.00

Pit Viper SWAT 360 Kit - Camera kit bundle packaged with SWAT mission in mind. The bundle comes with one Bounce Explorer Unleashed Kit, one Pit Viper 360 camera kit, one Recce 360 Mini Mk III, one large tablet for utilizing camera, and hard sided case with custom foam insert. Kit includes everything needed to execute SWAT mission set, in extremely low light conditions, while increasing situational awareness and improving officer safety.

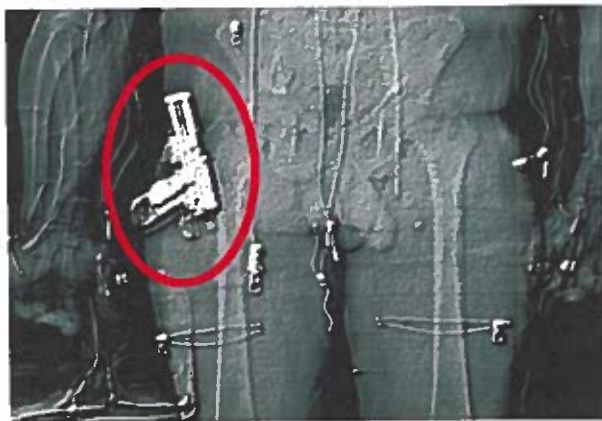
\$29,300.00



Optional Features for Added Value

- **Photo Matching for Evidentiary Proof.** Intercept's built-in camera enables the creation of encrypted files matching subject photos with their scanned image.
- **Networking Software.** Intercept Manager™ offers remote viewing and management that is essential for institutions deploying multiple body scanners.
- **Thermal Scanner for Health Protection.** FDA-approved thermal scanner measures and records the temperature of each subject, providing an early indication of COVID-19 and other infections.
- **Random Zero-Dose Scan Feature.** Minimizes radiation exposure for frequently scanned subjects while providing an effective contraband deterrent. Flexible settings enable application to 10%-50% of scans.
- **Software Available in English and Spanish.**

Tek84 Listens. Our state-of-the-art technology and free software updates create a dynamic product that offers the best value proposition in security full-body scanning today... and tomorrow.



The superior image quality of Tek84 Intercept makes anomalies "pop out" on scans for faster, easier detection.



An actual seizure from a U.S. jail during a routine scan during booking showed a dark anomaly in the rectum that turned out to be two balloons containing cannabis gummies and sleeping pills.

Specifications

Physical

Footprint: 34" x 72" (86 x 183 cm)
 Height: 90" (211 cm) fully assembled
 79" (201 cm) top removed for transport
 Weight: 720 lbs. (328 kg)

Electrical

Power: 100/120/230 VAC; 50/60 Hz; 800 Watts;
 Tolerant of poorly regulated power

Environmental

Operating: 32-120 degrees F (0-50 degrees C)
 Humidity: Less than 95%, noncondensing

Scan Time

0.25-2.0 uSv 3.8 seconds
 4.0 uSv 8 seconds
 8.0 uSv 16 seconds

Radiation Safety

Dose: General-use 0.25 uSv (25 uRem) per scan, suitable for daily screening; limited-use: up to 8.0 uSv (800 uRem) per scan, suitable for weekly screening; effective dose to subject measured in accordance with ANSI/HPS N43-17-2009

Leakage: Inspection zone is the scanner footprint; <20 uGy (2 mR) in any 1 hour

Standards: Complies with ANSI/HPS N43-17-2009 (Body Scanner Radiation Safety); Complies with ANSI/IEEE N42.47-2010

Intercept is protected under U.S. patents: 10,481,295, 10,705,244, and 10,705,245. International and other U.S. patents are pending.





Quote

February 26, 2026

Chad Wicker
 Tate County Sheriffs Office- Jail
 1 Justice Drive
 Senatobia, MS 38668
cwicker@tatecountymms.gov

QUO 2026-02-23
 901-603-9135

Please see the quotation below for the Tek84 Intercept Body Scanner. The scanner includes all that is listed below as well as (1) built in camera to include a photo of the subject with each scan (2) Your agency's logo on the scanner, kiosk, and each exported image. (3) Training by a(ARRT-certified radiology) medical professional on the use of the product, required radiation training and expert training on reading the scan results. (4 A one-time upload of Subject data –an upload of a current list of subjects – both current and previously in your facility (5) 1 Years warranty parts and labor.

Qty	Part Number	Description	Net Each	Ext Price
1	SSD-018-0100	Tek84 Intercept Whole Body Security Scanning System	\$ 139,000.00	\$ 139,000.00
		Made in the USA Variable Scanning Dosage from 0.25 uSv to 8.0 uSv < 4 Second Scan Time 34" X 72" X 90" (79" top removed) foot print 6 scan filters - high resolution, 3-D, & detail with invert 16 million Grey Scale Levels 110 V/60hz. 1Kva 1 million image storage capacity Tethered Ethernet Connected Work Station with 27" Vertically Mounted Touch Screen Monitor		
1	INSTALL	Install, configure, calibrate and test Intercept and kiosk station	Included	
1	INT-Training	Up to 2.5 days Formal, classroom, on-site	Included	
1	INT-WARRANTY	Initial One (1) Year Parts and Labor on Entire System from Time of Delivery with one (1) PM and Radiation Survey	Included	
1	INT-Shipping	Freight from San Diego, CA to Senatobia, MS 38668	\$ 3,500.00	\$ 3,500.00
		Leasing Option: SSD-018-0100-L Tek84 Intercept Whole Body Scanner - 5 year Lease, monthly SSD-018-0100-L Tek84 Intercept Whole Body Scanner - 5 year Lease, yearly		
		Optional Items:		
	SSD-020-1021	Tek Net Server - alloys intercepts to communicate	\$9,999.00	
	INT-13450	Per Intercept TekNet connection	Included	
	SSD-020-1100	Intercept Manager Software Application to remotely review images	\$ 2,000.00	\$ -
		Intercept Manager Application Annual License fee	\$ 400.00	\$ -
		TekNet Annual Fee	\$ 1,500.00	\$ -
		AI Software License	\$ 9,999.00	\$ -
		AI software maintenance and upgrades	\$ 4,999.00	\$ -
0	SSD-018-9950	Thermal Scanner, touchless and records temperature	\$ 20,000.00	\$ -
0	SSD-020-1150	Desktop PC with Intercept Manager software installed	\$ 5,875.00	\$ -
0	SSD-017-9706	Wall mounted touchscreen monitor	\$ 2,500.00	\$ -
0	INT-EXT-WAR	Years of Additional Warranty Starting Month 13**	\$ 8,900.00	\$ -
		Qty discount	\$ -	\$ -
		Total		\$ 142,500.00

**Special offer with initial purchase, otherwise current market price after delivery.

By execution of this agreement, by an authorized signature, the customer agrees to purchase the products specified subject to the terms and conditions set forth in the agreement and subject to Tek84 Terms and conditions available at www.Tek84.com.

This quote will expire on: 04/27/26
 Delivered-at-place: Senatobia, MS 38668
 Terms: Net 30
 Taxes: Circle one Exemption certificate attached Tax rate provided here:
 *If taxes apply, please request updated quote

Accepted By: _____ Prepared by: Jeff Parker, Strategic Account Manager
 Printed Name and Title: _____
 Authorized Signature:  _____
 Date: _____ 2/26/2026



VENTURE TACTICAL
SURVIVAL TECHNOLOGIES

All

Search for articles



Home

Optics & Lights

Medical

Night Vision

PPE

Brands

Blog

Reviews

ADDITIONAL DISCOUNT

YOUR CART



Aim Point

Aimpoint Micro™ LRP (Lever Release Picatinny) QD Mount - base only

\$151.00 ~~\$167.00~~

- 12 +



\$1,812.00

~~\$2,004.00~~

Add order note

Taxes, discounts and shipping calculated at checkout.

SUBTOTAL:

\$25,799.88 USD

STEINER

STEINER: DBAL-A2-AN/PEQ-

UNLOCK A LIFETIME OF SAVINGS

DBAL-A2-AN/PEQ-
-ing Laser -
-TRICTED

\$23,987.88

~~\$25,187.88~~

Checkout

shop



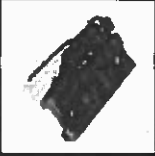
Chat

1

\$1,998.99 ~~\$2,098.99~~

- 12 + 

YOU MAY ALSO LIKE...



AIMPOINT® LRP FOR COMPM4 SERIES SIGHTS
(LEVER RELEASE PICATINNY) MODULAR BASE
ONLY

\$152.00 ~~\$162.00~~

Add to cart



Contact Support Center
Export help & advice



Check Order Status
Login and start tracking



Returns & Exchanges
Submit a return or exchange

UNLOCK A LIFETIME
OF SAVINGS

PINE BELT

AUTO GROUP

PINE BELT
CHEVROLET

COURTESY
Ford

PINE BELT
Jeep RAM

2026 Ram 1500 Crew Cab 4x4

5.7l v8 hemi

Tradesman Package

Full Size Spare Tire and Wheel

U connect System w/ touchscreen

Trailer Hitch

Express Package

Cloth Seats

Mopar side steps (Black)

Keyless entry

20" Black Wheels

Limited Slip Axle

Carpet Flooring

TOTAL PRICE: \$ 45,480.00

Ritchie Bearden

662-360-8590

rbearden@pinebeltmotors.com



VALORENCE

EQUIPMENT QUOTE

PREPARED FOR:

Tate County Sheriff's Office -
Mississippi

Major Thomas Nickels



Items this packet contains:

- Mission Statement
- Procurement Options
- Quote or Quotes
- Other Available Products
- Product Details Pages
- **Sole Source Letter**
- **W9**

VALORENCE

Mission Statement:

We produce and provide quality, reliable, and innovative technology that saves lives, promotes safety, and protects property, or facilitates mission-critical objectives for the end-users .

What our product can do for your organization:

Valorence, LLC works with Law Enforcement agencies around the United States and Canada. We provide Law Enforcement Agencies like Tate County Sheriff's Office - Mississippi with innovative solutions that keep your communities safe, promote officer safety, and save time and money.

Procurement Powerhouse:

With over a decade worth of procurement experience, we know how to get it done. We are well versed in a wide variety of procurement vehicles:

- Federal / State / Local Requirements
- Federal GSA Contract Holder
- State Contracts
- Grants
- Local Third-Party Procurements
- Sole Source Justifications
- Request For Quote Proposals

About Us:

Valorence, LLC has been in business since 2010 and has provided surveillance solutions to law enforcement in some of the coldest, hottest and most humid areas in North America. Our team has several decades worth of law enforcement experience and surveillance implementation. We understand our clients and the important roll that quality reliable surveillance equipment plays in keeping you and your team safe. We designed each of our systems with simplicity and reliability in mind. Our innovative technology provides us the unique ability to provide the highest uptime in the industry. Each system we sale comes with one year of 24/7 Mission Critical Support so you have a peace of mind knowing that you can always get the help you need, when you need it.

VALORENCE

918 W 700 N Ste 111
Logan, Utah, 84321

COVERT
LAW ENFORCEMENT

QUOTE PACKET OVERVIEW

This quote packet contains multiple quotes. The following is an outline of those quotes. Please review the rest of the packet for detailed quote information.

Tate County Sheriff's Office - Mississippi
Senatobia MS 38668

OPTIONS FOR QUOTE QUOTE-PD 2536

Option A	Option B	Option C
Snitch Pole Cam - Q6355 / 5G (Laser Focus)	Snitch Pole Cam - Q6325 / 5G	Solar Power Supply 3800 Watts \$5,950
512GB of Onboard Storage	512GB of Onboard Storage	Mobile Power Supply 3800 Watts \$4,500
External IR Flood Light	External IR Flood Light	
Vehicle Mount Kit	Vehicle Mount Kit	
Tripod Mount Kit	Tripod Mount Kit	
\$14,299.00	\$13,810.00	



Valorence, LLC (DBA: Covert Law Enforcement)
Mailing / Payment: 649 N 170 E, Smithfield, UT,
84335
Physical: 918 W 800 N Ste 111, Logan, UT 84321
GSA: 1756 North 8150 West, Mendon, UT 84325

VALORENCE
COVERT
LAW ENFORCEMENT

888.621.5558 • www.valorence.com

VALORENCE

• Est. 2010 • sales@valorence.com

VALCURENCE

918 W 700 N Ste 111
Logan, Utah, 84335

COVERT
LAW ENFORCEMENT

QUOTE

OPTION A:

- Snitch Pole Cam - Q6355 / 5G
- 512GB of Onboard Storage (2 Weeks of Storage)
- External IR Flood Light
- Vehicle Mount Kit
- Tripod Mount Kit

Note: All Advanced Covert Law Enforcement (CLE) Surveillance Systems come with a full one year manufacturer's warranty on all parts and labor. 1 year extension(s) of the Mission Critical Warranty and Support is an extension beyond that first year, and can be renewed up to 5 years. Secure Law Enforcement (SLE) items are excluded from this warranty structure.

Quote No.: QUOTE-PD 2536A

Prepared for: Tate County Sheriff's Office -
Mississippi

Quote Date: 2026-02-26

Senatobia MS 38668

Exp. Date: 2026-05-28
or 3 Months from Issuance
Date, whichever is sooner.

Name	Price	QTY	Subtotal
------	-------	-----	----------

VALORENCE

Snitch Cam - Q6355 / 5G	\$10,739.00	1	\$10,739.00
V1200-Q6355			
<p>Overview: Remotely operated & managed surveillance system with rapid deploy, pole or vehicle mount surveillance options. The ability to deploy this system covertly, overtly, or in a high-visibility manner is one of the key features.</p>			
<p>CAMERA:</p>			
<ul style="list-style-type: none"> • Q6355-LE PTZ • Image Sensor - CMOS • Image Sensor Size - 1/1.7" • Lightfinder 2.0 • Forensic WDR • Min illumination/ light sensitivity (color) 0.06 lux • Min illumination/ light sensitivity (B/W) 0.001 lux • Pan Range 360° endless • Tilt Range +20° to -90° • Preset Position Tour • 31X Optical Zoom • 12X Digital Zoom • Signed OS • Secure boot • Zipstream • H.264 Baseline, High, Main • H.265 • AV1 • Built-in IR • Optimized IR • Operating temperature -58°F to 131°F (-50°C to 55°C) • Outdoor Ready • Vandal rating IK10 • IP Rating IP66, IP67 • Audio Support • Active Tampering • Autotracking 2 • Orientation aid PTZ • 1920x1080 • Max Frames Per Second 50/60 • Day and Night functionality • Electronic image stabilization • Lens Focal Length 6.91 - 214.64mm • Horizontal Field of View 60.6° - 2.0° • Vertical Field of View 36.5° - 1.1° 			

VALORENCE

- 256GB onboard storage (Approximately 2 - 3 days of storage)

Enclosure:

- Industrial grade aluminum
- Durable powder-coated gray exterior (other colors by request)
- Quick deploy mounting bracket
- Three (3) acrylic tinted windows with perforated vinyl decals
- 225° field of view through 3 large windows
- High-gain external 5G LTE antenna
- Designed to accommodate harsh outdoor elements & environments (deserts, high altitudes, or oceanside locations)
- Enclosure appears as standard power pole mounted electrical enclosure
- Versatile deployment options such as on a power poles, streetlight poles, rooftops, residential or business windows, or vehicles

Router:

- Peplink MAX BR1 mini 5G LTE
- FirstNet available public safety network certified
- Networks Available: AT&T, Verizon, Sprint, Telstra, T-Mobile, U.S. Cellular, Bell, Rogers, TELUS, Vodafone, EE
- Optus Wi-Fi 802.11 a/b/g/n/ac.

CLE Smart Control System:

- Web interface to monitor system, including temperature and power
- Scheduled daily system restart
- Ability to schedule system standby to save battery
- Email/SMS text notifications for alarms
- Key fob remote restart failover
- Restart system from web interface
- Temperature controlled fan and overheat protection
- High-temperature notifications and protective system shutdown

Power:

- Input AC: 90-260 V-AC, 50 watts
- 50-60Hz Input DC: 12 V-DC (5A Fused) (Powered from Mobile Power Supply, or Solar Power Supply)
- Standard Protections: Reverse Polarity / short circuit/overload / over voltage / over temperature

VALORENCE

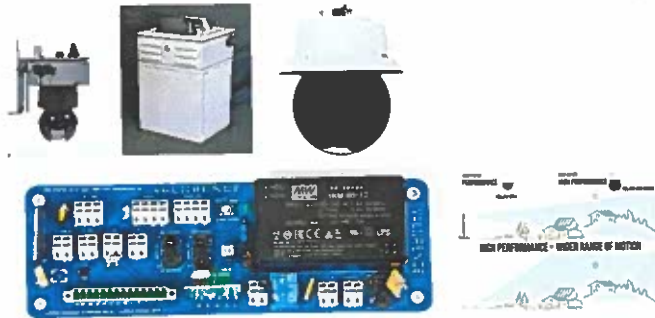
General Info:

- Operating Temperature: -30 to 140 °F (-35 to 60 °C)
- Storage Conditions: -40 to 70 °C (-40 to 158 °F).

Items Included With Purchase:

- Metal mounting bands
- Lag bolt
- Stripped 14 AWG power cable for linemen to connect to power line
- 20-foot 16 AWG AC power extension cord

Components outlined that go end of life may be replaced with an equal or greater component. Power tap available upon request only.



512GB Storage

A00000-512

512GB Storage Upgrade



This is an upgrade of Storage for the Advanced Surveillance Systems with 512GB total internal storage.

\$300.00



1

\$300.00

VALORENCE

<p>External IR Flood Light 940</p> <p>A00000-940</p> <p>(GSA Eligible Item EIRGSA)</p> <p>External Integrated IR Lighting System designed to work with our covert camera systems in order to provide a reliable covert IR lighting option. The IR Illuminator can be attached directly to the exterior of the Snitch Pole Cam enclosure, or used independently and attached to the power pole (or other objects) with the Informer Pole Cam, the Lookout Cam, the Handler Cam, or the Narc Cam.</p> 	<p>\$1,750.00</p>	<p>1</p>	<p>\$1,750.00</p>
<p>Vehicle Mount - Snitch Cam</p> <p>AV1100-VMT</p> <p>GSA Eligible Item</p> <p>Vehicle mount for the Snitch pole camera.</p> <p>This is a metal brace with a bracket that is used to wedge between the seat and the ceiling of a vehicle that allows for the camera to be placed in the window of a vehicle for optimal use and concealment.</p> 	<p>\$450.00</p>	<p>1</p>	<p>\$450.00</p>

VALORENCE

<p>Tripod - Snitch Cam</p> <p>AV1100-TRI</p> <p>GSA Eligible Item</p> <p>The Tripod Mount is a mobile tripod designed to mount the Snitch camera system onto a tripod mount that has an adjustable height of greater than 60 Inches.</p> 	\$525.00	1	\$525.00
<p>Shipping - Pole Camera / Vehicle Mount / Tripod</p> <p>SV2100 SAC2100-TRI SAV1100</p> 	\$535.00	1	\$535.00
			\$14,299.00

Tax (EXEMPT) **\$0.00**

Total \$14,299.00



Valorence, LLC (DBA: Covert Law Enforcement)
 Mailing / Payment: 649 N 170 E, Smithfield, UT 84335
 Physical: 918 W 700 N Ste 111, Logan, UT 84321
 GSA: 1756 North 8150 West, Mendon, UT 84325

888.621.5558 • www.valorence.com
 • Est. 2010 • sales@valorence.com

VALORENCE

COVERT
 LAW ENFORCEMENT

VALCOURNCE

918 W 700 N Ste 111
Logan, Utah, 84335

COVERT
LAW ENFORCEMENT

QUOTE

OPTION B:

- Snitch Pole Cam - Q6325 / 5G
- 512GB of Onboard Storage (2 Weeks of Storage)
- External IR Flood Light
- Vehicle Mount Kit
- Tripod Mount Kit

Note: All Advanced Covert Law Enforcement (CLE) Surveillance Systems come with a full one year manufacturer's warranty on all parts and labor. 1 year extension(s) of the Mission Critical Warranty and Support is an extension beyond that first year, and can be renewed up to 5 years. Secure Law Enforcement (SLE) items are excluded from this warranty structure.

Quote No.: QUOTE-PD 2536B
Quote Date: 2026-02-26
Exp. Date: 2026-05-28
or 3 Months from Issuance
Date, whichever is sooner.

Prepared for: Tate County Sheriff's Office -
Mississippi
Senatobia MS 38668

Name	Price	QTY	Subtotal
------	-------	-----	----------

VALØRENCE

<p>Snitch Cam - Q6325 / 5G</p> <p>V1200-Q6325</p> <p>Overview: Remotely operated & managed surveillance system with rapid deploy, pole or vehicle mount surveillance options. The ability to deploy this system covertly, overtly, or in a high-visibility manner is one of the key features.</p> <p>Camera:</p> <ul style="list-style-type: none"> • Axis Q6325-LE PTZ Camera • Image Sensor Size 1/1.7" • Lightfinder 2.0 • Forensic WDR • Min illumination/light sensitivity (Color) 0.06 lux • Min illumination/light sensitivity (B&W) 0.001 lux • Pan Range 360° endless • Tilt Range +20° to -90° • Preset Position Tour • 31x Optical Zoom • 12x Digital Zoom • Signed OS • Secure Boot • Zipstream • H.264 Baseline, High, Main • H.265 • AV1 • Built-in IR • Optimized IR • Operating Temperature -58°F to 131°F (-50°C to 55°C) • Outdoor Ready • Vandal Rating IK10 • IP Rating IP66, IP67 • Active Tampering • Autotracking 2 • Orientation aid PTZ • Max Video Resolution 1920x1080 Resolution • Max Frames Per Second 50/60 • Day and Night Functionality • Electronic Image Stabilization • Lens Focal Length 6.91 - 214.64 mm • Lens Horizontal Field of View 60.6° - 2.0° • Lens Vertical Field of View 36.5° - 1.1° • 256GB Onboard Storage (Approximately 2 - 3 days of storage) 	<p>\$10,250.00</p>	<p>1</p>	<p>\$10,250.00</p>
---	--------------------	----------	--------------------

VALORENCE

Enclosure:

- Industrial grade aluminum
- Durable powder-coated gray exterior (other colors by request)
- Quick deploy mounting bracket
- Three (3) acrylic tinted windows with perforated vinyl decals
- 225° field of view through 3 large windows
- High-gain external 5G LTE antenna
- Designed to accommodate harsh outdoor elements & environments (deserts, high altitudes, or oceanside locations)
- Enclosure appears as standard power pole mounted electrical enclosure
- Versatile deployment options such as on a power poles, streetlight poles, rooftops, residential or business windows, or vehicles

Router:

- Peplink MAX BR1 mini 5G LTE
- FirstNet available public safety network certified
- Networks Available: AT&T, Verizon, Sprint, Telstra, T-Mobile, U.S. Cellular, Bell, Rogers, TELUS, Vodafone, EE
- Optus Wi-Fi 802.11 a/b/g/n/ac.

CLE Smart Control System:

- Web interface to monitor system, including temperature and power
- Scheduled daily system restart
- Ability to schedule system standby to save battery
- Email/SMS text notifications for alarms
- Key fob remote restart failover
- Restart system from web interface
- Temperature controlled fan and overheat protection
- High-temperature notifications and protective system shutdown

Power:

- Input AC: 90-260 V-AC, 50 watts
- 50-60Hz Input DC: 12 V-DC (5A Fused) (Powered from Mobile Power Supply, or Solar Power Supply)
- Standard Protections: Reverse Polarity / short circuit/overload / over voltage / over temperature

General Info:

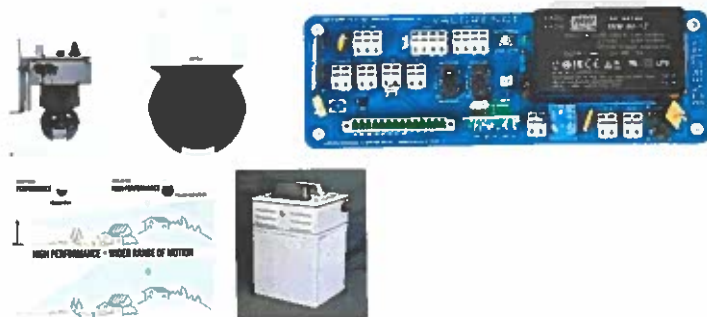
VALORRENCE

- Operating Temperature: -30 to 140 °F (-35 to 60 °C)
- Storage Conditions: -40 to 70 °C (-40 to 158 °F).

Items Included With Purchase:



- Metal mounting bands
- Lag bolt
- Stripped 14 AWG power cable for linemen to connect to power line
- 20-foot 16 AWG AC power extension cord

Components outlined that go end of life may be replaced with an equal or greater component. Power tap available upon request only.





<p>512GB Storage</p> <p>A00000-512</p> <p>512GB Storage Upgrade</p> <p>This is an upgrade of Storage for the Advanced Surveillance Systems with 512GB total internal storage.</p>	<p>\$300.00</p>	<p>1</p>	<p>\$300.00</p>
--	-----------------	----------	-----------------

VALORENCE

<p>External IR Flood Light 940</p> <p>A00000-940</p> <p>(GSA Eligible Item EIRGSA)</p> <p>External Integrated IR Lighting System designed to work with our covert camera systems in order to provide a reliable covert IR lighting option. The IR Illuminator can be attached directly to the exterior of the Snitch Pole Cam enclosure, or used independently and attached to the power pole (or other objects) with the Informer Pole Cam, the Lookout Cam, the Handler Cam, or the Narc Cam.</p> 	<p>\$1,750.00</p>	<p>1</p>	<p>\$1,750.00</p>
<p>Vehicle Mount - Snitch Cam</p> <p>AV1100-VMT</p> <p>GSA Eligible Item</p> <p>Vehicle mount for the Snitch pole camera.</p> <p>This is a metal brace with a bracket that is used to wedge between the seat and the ceiling of a vehicle that allows for the camera to be placed in the window of a vehicle for optimal use and concealment.</p> 	<p>\$450.00</p>	<p>1</p>	<p>\$450.00</p>

VALORENCE

Tripod - Snitch Cam	\$525.00	1	\$525.00
AV1100-TRI GSA Eligible Item			
The Tripod Mount is a mobile tripod designed to mount the Snitch camera system onto a tripod mount that has an adjustable height of greater than 60 Inches.			
			
Shipping - Pole Camera / Vehicle Mount / Tripod	\$535.00	1	\$535.00
SV2100 SAC2100-TRI SAV1100			
			
\$13,810.00			

Tax (EXEMPT) **\$0.00**

Total \$13,810.00



Valorence, LLC (DBA: Covert Law Enforcement)
 Mailing / Payment: 649 N 170 E, Smithfield, UT 84335
 Physical: 918 W 700 N Ste 111, Logan, UT 84321
 GSA: 1756 North 8150 West, Mendon, UT 84325

888.621.5558 • www.valorence.com
 • Est. 2010 • sales@valorence.com



VALOURENCE

918 W 700 N Ste 111
Logan, Utah, 84335

COVERT
LAW ENFORCEMENT

QUOTE

OPTION C:


- **Solar Power Supply - 3800 Watts**
(For Power Pole, Vehicle, or Tripod Deployments)
- **Mobile Power Supply - 3800 Watts**
(For Vehicle, or Tripod Deployments)

Note: All Advanced Covert Law Enforcement (CLE) Surveillance Systems come with a full one year manufacturer's warranty on all parts and labor. 1 year extension(s) of the Mission Critical Warranty and Support is an extension beyond that first year, and can be renewed up to 5 years. Secure Law Enforcement (SLE) items are excluded from this warranty structure.



Quote No.: QUOTE-PD 2536C Prepared for: Tate County Sheriff's Office -
Quote Date: 2026-02-26 Mississippi
Exp. Date: 2026-05-28 Senatobia MS 38668
or 3 Months from Issuance
Date, whichever is sooner.

Name	Price	QTY	Subtotal
------	-------	-----	----------

VALORENCE

<p>Solar Power Supply - 3800 Watts</p> <p>P2230</p> <p>LiFePo4 Mobile Power Supply with Solar Panel:</p> <ul style="list-style-type: none">• 300 Ah / 3600 Watts 12 Volt• Metal battery enclosure with solar panel mountable on a power pole• Standard power cord plug-in for rapid charging (approximately 8 -12 hours) from 120V if used independently of the solar panel• 1 year warranty parts and labor• Approximately 85 pounds <p>This power supply is capable of operating a standard Valorence Surveillance system for 5 - 7 days without any supplemental power, if using the solar panel the standard system run time varies between 4 weeks and indefinite.</p> 	<p>\$5,950.00</p>	<p>1</p>	<p>\$5,950.00</p>
--	-------------------	----------	-------------------

VALORENCE

<p>Mobile Power Supply - 3800 Watts</p> <p>P1130</p> <p>LiFePo4 Mobile Power Supply:</p> <ul style="list-style-type: none"> • 300 Ah / 3800 Watts 12 Volt • Rugged Pelican case with wheels for easy transport • Standard power cord plug-in for rapid charging from 120V • 1-year warranty on parts and labor • Standard 120V power cord plug-in for rapid charging (approximately 8 -12 hours) • 1 year warranty on parts and labor • Approximately 85 pounds <p>This power supply is capable of operating a standard Valorence Surveillance system for 5 - 7 days without any supplemental power.</p> 	\$4,500.00	1	\$4,500.00
<p>Freight</p> <p>S00000-SFR</p> 	\$675.00	1	\$675.00
			\$11,125.00

Tax (EXEMPT) **\$0.00**

Total \$11,125.00

VALORENCE



888.621.5558 • www.valorence.com

• Est. 2010 • sales@valorence.com

VALORENCE

COVERT
LAW ENFORCEMENT

VAL⁺RE⁺NCE



Also Available

Product	Basic Description	Price Range
	<p>Snitch Pole Camera</p> <p>Rapid deploy pole or vehicle mount surveillance solution. The ability to deploy this system covertly or in a high visibility manner is one of the key features.</p>	<p>\$8,400 ~ \$11,000</p>
	<p>Snitch Pole Cam IR Flood Light</p> <p>Provides a reliable covert IR lighting option. The IR Illuminator can be attached directly to the external DPM Pole Camera enclosure.</p>	<p>\$1,750</p>
	<p>Informer Pole Camera</p> <p>This surveillance system is designed to be deployed primarily in a covert manner on a power pole, on the side of building, with 120v AC, or from a vehicle with a mobile power supply.</p>	<p>\$7,899 ~ \$10,499</p>
	<p>Dispatcher Pole Camera</p> <p>See all angles at the same time with this high visibility 360° panoramic surveillance system. This camera is ideal for large gathering, city parks, street corners, or intersections.</p>	<p>\$8,575 ~ \$15,160</p>
	<p>The Handler Camera</p> <p>With a full power supply and vehicle mount kit the Handler Cam has everything needed to deploy from a vehicle for 5 - 6 days.</p>	<p>\$15,049 ~ \$16,394</p>
	<p>Narc Camera</p> <p>Four pinhole lens cameras can be permanently or semi permanently installed into an undercover vehicle, in a hotel room, or a drop vehicle for live surveillance. Add a microphone for active listening.</p>	<p>\$8,500 ~ \$14,350</p>
	<p>Lookout Camera</p> <p>A completely self sustained ground mount system that blends into any urban environment. Solar supplemented power will run this system for 6 - 30 days, or plug directly into power for unlimited deployments. The Lookout cam can be quickly deployed on any government easement, or deployed in a drop vehicle.</p>	<p>\$20,149 ~ \$28,700</p>

VALORENCE

Product	Basic Description	Price Range
	<p align="center">Pole Mounted Solar Power Supply</p> <p>Harness the power of the sun for your covert and overt surveillance deployments. Get power to your system when the power company doesn't allow direct connect, or use as a back up during outages.</p>	<p align="center">\$5,950 ~ \$6,750</p>
	<p align="center">Mobile Power Supply</p> <p>Advanced battery technology powers our surveillance systems for multiple days. Daisy chain power supplies, for longer deployments, and know with a 10 year expected life span you're investing in the future.</p>	<p align="center">\$4,500 ~ 5,300</p>
	<p align="center">Vehicle Mount Kit</p> <p>Extend the versatility of our pole cameras, and ground mount system with the rapid deploy vehicle mount. By strategically placing the camera behind the vehicle window, targets can be monitored from any place you can park a vehicle.</p>	<p align="center">\$450</p>
	<p align="center">Onboard Storage Upgrade (512 GB – 8 TB)</p> <p>The onboard storage increases your camera's internal memory allowing you to capture and store more high resolution photos and videos without relying on external media.</p>	<p align="center">\$300 ~ \$1,500</p>
	<p align="center">Surveillance Trailer Camera Mount and Power Supply</p> <p>Strategically deploy your cameras in a high visibility manner. Officer presence is key to managing community events and crime reduction efforts. This system integrates solar panels, batteries, and a telescoping mast that send the message of safety and security.</p>	<p align="center">\$55,000 ~ \$90,000</p>
	<p align="center">Mission Critical Warranty & Support</p> <p align="center">24/7 Mission Critical Support Training Deployment Assistance Email Support Software / Firmware / Operating System Updates Trouble Shooting Repair and Triage Return (Priority 1) Parts & Labor</p>	<p align="center">\$650 ~ \$8,650</p>

VALORENCE

Product	Basic Description	Price Range
	<p style="text-align: center;">Recording Server</p> <p>Duplication of evidence and quick easy access is beneficial for some agencies. Having physical hardware is preferred for some clients and reasons vary from ease of access to agency policy.</p>	<p style="text-align: center;">\$5,500 ~ \$7,000+</p>
	<p style="text-align: center;">Cloud Storage</p> <p>For those agencies that want the benefits of having duplicated evidence and easy playback, but don't want the overhead of managing the hardware. There are multiple cloud based solutions with multiple options to meet specific needs.</p>	<p style="text-align: center;">\$750 ~ \$1,000 Yearly</p>

VALORENCE

Client Testimonials



"Covert Law Enforcement has gone above and beyond time and time again! I have worked with a lot of companies and vendors and I can tell you now its not just me, its also our IT department that loves them just as much because Covert Law Enforcement always fix the issues we run into. When other vendors don't support their product or they simply referred us to our own IT department."

Detective John Pavia
Lynchburg Police Department - Virginia



"We requested a 360 degree camera solution that was reasonably priced but met all of our needs. Valorence worked with us very closely and designed a custom, compact and very well thought out camera system that exceeded our expectations. The quality and workmanship is second to none."

Detective Sergeant of Forensics Glenn Vandegrift
Bensalem Township Police Department - New Jersey



"We have been working with Covert Law Enforcement surveillance systems for years now, and know them to be extremely reliable and effective. We have found it a great tactical advantage to deploying the surveillance systems prior to our search warrant execution. The intel gathered by using the surveillance systems is invaluable for case prosecution and Officer safety."

Sgt. Brooks Davis
Cache Rich Drug Task Force - Utah



"I believe that as a Captain over the investigations division, it is imperative to provide my detectives with the tools they need to succeed and keep the community safe. We purchased our first system in 2010, and over the last several years we have purchased several more because each division has found a need to use them. They have been used on everything from metal thefts, and drug investigations, to a child predator, and homicide investigations. As an administrator, I also get an overview of the various investigations that are being conducted."

Captain Tyson Budge
Logan City Police Department - Utah



"The staff has been phenomenal to work with. Anytime I had a question, or issue, the response was immediate and on point. Thus far, this camera has been, by far, the best camera system we have ever utilized in our investigative actions. It is user friendly, and has more than met our expectations to date."

Deputy Shafter Baker
Noble County Sheriff's Office - Indiana

VALORENCE

Client Testimonials



"From the customer service to product deployment and training, Covert Law Enforcement has proven to be top notch in every way. The mini pole cam has assisted in countless investigations the past year and I anticipate on many more the next several years as well. The ease of maneuverability, simplicity in operation and extremely covert nature of the product make it a must have for any LE agency serious about making an impact in community safety. The covert pole cams assist us the most. We are looking to purchase additional ones in the future."

Sergeant Josh May

Chattanooga Police Department, Tennessee



"When the cameras are deployed in area's of interest we are successful in capturing video of major crimes like shootings, robberies and homicides, just about every single time that they are deployed. That's how beneficial this technology can be to Law Enforcement and to the community we work for. There was one homicide of a young child that we arrested 13 people on, specifically because we had the cameras in use. We never would have gotten there without this technology."

Sergeant George Miller

US Marshal Violent Offender Task Force - Lake Charles, Louisiana



"We have worked with Valorence for years. As our community has grown we have had more need for the mobile surveillance that they provide us with. We have been able to use the surveillance cameras to solve a large variety of criminal investigations ranging from homicides and human trafficking on down to drugs and trespassing."

Investigator Brandon Hazelwood

Frederick County Sheriffs Office - Virginia



Cover Law Enforcement has provided a tremendous tool for us to utilize for investigations and most recently for surveillance during the Boston Marathon. While setting these cameras up for the Marathon, there was a technical issue that I had encountered and the support team quickly remedied the situation, immediately responded via email when it was fixed and also offered additional support via telephone to be sure everything was online. We are up and running more smoothly than ever."

Lieutenant Howard

Natick Police Department - Massachusetts

"Covert Law Enforcement has provided my agency with the tools we need to complete major investigations on multiple occasions. They have been extremely helpful with the rare issues that arrive when their devices are deployed in the field. I would recommend them to any agency looking to increase their effectiveness and efficiency when handling modern day crime."

Detective Bobinger

VALORENCE



Charleston Police Department - West Virginia

VALORENCE

Quote Acceptance:

Quote #: QUOTE-PD 2536 Option:

Tate County Sheriff's Office - Mississippi
Senatobia MS 38668

At Valorence, LLC, we strive to ensure clarity and fairness in our payment processes while accommodating the unique nature of our built-to-order surveillance equipment. This policy outlines the payment terms and conditions as well as high-level terms and conditions to maintain a transparent and effective business relationship with our clients. Detailed terms and conditions can be found on our websites at www.valorence.com and www.covertlawenforcement.com.

- **Quotes:** Quotes are valid only through date listed and all documents provided by Valorence, LLC remain property of Valorence, LLC and shall not be used or disclosed to any third party without prior written consent. This document expires on: 2026-05-28
- **Placing an Order:** Our products are build-to-order. We require a signed copy of the quote with the associated new order information filled out before we can put the order into the build queue.
- **Order Shipment:** A valid purchase order or a minimum 50% payment is needed before dispatching your order. Exceptions can be made for special procurement processes with prior agreement.
- **Invoice Issuance:** Invoices are Net 30 and will be issued at the time of order placement. Due to the requirement for cellular service activation, which is not always immediate and is dependent upon the client, we invoice at the time of order, not delivery. Payment is expected Net 30 from the time of the order.
- **Payment Period:** Please note that not all equipment can be manufactured within the initial two weeks, and certain components may extend production lead times to several months. Some agencies adhere to a payment policy of net 30 days following delivery. We understand that this may conflict with the agency's procurement policies so we will refrain from applying late fees until 45 days post-delivery, however, we will issue the original invoice and send regular reminders starting from the order date, not the delivery date.
- **Remittance:** Please remit the check or money order to:

Valorence, LLC
649 N 170 E,
Smithfield UT
84335

ACH
Business Name: Valorence, LLC
Bank: Wells Fargo
Routing Number: 121000248
Account Number: 1405583053

- **Cellular Service Activation:**

VALORENCE

- Cellular activation and functionality of the cellular service are the sole responsibility of the agency unless otherwise stated. Valorence, LLC is not liable for cellular coverage, signal strength, data caps, usage, system overload, or network speed
 - Equipment can be used with limited features without cellular service. The inability of the client to acquire proper static IP cellular service is not a valid reason for return.
 - Failure to get proper cellular service does not negate the purchase order.
 - If the cellular service is not activated within two weeks of the order, Valorence reserves the right to ship the product without activation, or in part depending on the circumstances.
 - In cases where the product shipped without cellular service, the equipment may need to be returned to Valorence for cellular troubleshooting or programming. If this is the case, the client will bear all associated shipping fees and/or setup fees, as this is not covered under the warranty.
 - The inability of the client to acquire proper static IP cellular service is not considered to be a reason for the return of CLE products and can not be returned on this basis.
-
- **Late Payment Fees:** Late payment fees, amounting to 3% of the invoice total per month, will be assessed starting 45 days from the delivery date.
 - **Credit Card Fees:** All Credit Card Orders have a 3% credit card processing fee.
 - **Tax-Exemption:** Valorence, LLC assumes Federal, State, and Local government agencies are tax-exempt unless otherwise specified. Clients must identify tax requirements at the quote stage. Failure to do so means the client is responsible for paying any applicable taxes. Clients should provide their tax exemption certificate to Valorence, LLC. If a client is not tax-exempt, they must inform us promptly for the invoice to be adjusted with the relevant taxes
 - **Warranty:** Products manufactured by Valorence, LLC come with a one-year manufacturer warranty. Additional years may be purchased separately at the time of original purchase. An automated invoice will be sent just prior to the warranty expiring along with any other annual subscriptions on the invoice. It is the client's responsibility to make sure the warranty is up to date. Unauthorized or intentional tampering with settings or components will void the warranty. If the product is not under warranty and experiences a malfunction the client is responsible for all shipping, hardware, and hourly rates for labor, including time troubleshooting issues on the phone or via email. Warranty excludes neglect, abuse, theft, negligence, accidental damage or the dismantling of components.
 - **Product:** Valorence, LLC does not deploy, or install surveillance equipment. We provide a finished product that is shipped to the end user who is responsible for the deployment in their unique use cases.
 - **Packing:** Keep the original packaging for your equipment. For repairs, return the equipment in its original packaging. Valorence, LLC is not responsible for damage to items returned without this packaging, and clients will be charged for any such damages.
 - **GSA:** Unless specifically identified as a GSA Item they are not on the GSA Contract. GSA Pricing is inclusive of the IFF.

VALO^{RE}RENCE

- **Follow-up:** The Client agrees to product satisfaction follow-up from Valorence, LLC or a third party if needed via phone or email.

Valorence, LLC is committed to providing quality, reliable, and innovative technology solutions. This payment policy is designed to ensure a smooth and fair transaction process for all our clients while allowing us to set proper budgetary expectations internally.

NEW PURCHASE and SETUP INFORMATION:

End User / Owner Agency if different from Purchasing Agency:

State: Quote: QUOTE-PD 2536

Sales Rep: Is this a GSA or State Contract Sale?

Total Price of Sale: Purchase Order Number If Available:

Shipping Address:

Critical Dates Associated with Sale (delivery/billing/etc...)

Accounts Payable Email Address:

Billing Address:

Quote issued to: Thomas Nickels Contact Email: gnickels@tatecountymys.gov

End User

Name: Title: Email:

Phone Number:

IF APPLICABLE:

Cell Service Provider:

Cell Service Point of Contact (who will be working to set up the Cell Service)?

Cell Service Point of Contact email: and phone number:

VALORENCE

Special Instructions / Term Exceptions:

I have read the payment terms listed on this quote and understand the expectations. I know that the full list of Terms and conditions are listed on the websites www.valorenice.com and www.CovertLawEnforcement.com and will reference those for further detail if needed.

Thomas Nickels
Major Tate County Sheriff's Office - Mississippi
OR
Authorized Representative of the aforementioned
Organization.

AGREED TO AND ACCEPTED:



Valorenice, LLC (DBA: Covert Law Enforcement)
Mailing / Payment: 649 N 170 E, Smithfield, UT,
84335
Physical: 918 W 700 N Ste 111, Logan, UT 84321
GSA: 1756 North 8150 West, Mendon, UT 84325

VALORENICE
COVERT
LAW ENFORCEMENT

888.621.5558 • www.valorenice.com
• Est. 2010 • sales@valorenice.com

Dodge Durango		Description	Price	MSRP
Qty	Model			
1	PKG-PSM-345	Havis Premium Passenger Side Mount Package mounting kit (Durango)	\$ 497.42	\$ 904
1	7170-0943-02	Gamber-Johnson Docking Station for TOUGHBOOK 40 Rugged Computer	\$ 948.56	\$ 1,828.00
1	7300-0162	Panorama GPSB 3-1 Sharkee - antenna	\$ 358.54	\$ 588.00
1	PJ862	Brother PocketJet 8 PJ-862 - printer - B/W - direct thermal	\$ 397.04	\$ 529.00
1	Brother PocketJet 8 Printer Mount	Brother PocketJet 8 Printer Mount	\$ 242.89	\$ 369.00
1	7160-0539	Gamber-Johnson mounting component	\$ 34.48	\$ 64.00
1	7300-0461	Gamber-Johnson - Lind Automobile Bare Wire Leads Power Adapter	\$ 181.76	\$ 193.75
1	FZ-40EZ00RBM	Panasonic Toughbook 40 - AI Ready - 14" - Intel Core Ultra 5 - 135H - 16 GB RAM - 512 GB SSD - 4G	\$ 4,662.90	\$ 5,476.84
1	FZ-VBR401M	Panasonic xPAK 1D/2D Barcode Reader for TOUGHBOOK 40 Laptop	\$ 687.97	\$ 806.96
			\$ 8,011.56	\$ 10,759.55
Dodge Ram		Description	Price	
Qty	Model			
1	PKG-PSM-352	Havis Premium Passenger Side Mount Package mounting kit (Ram)	\$ 550.07	\$ 959.00
1	7170-0943-02	Gamber-Johnson Docking Station for TOUGHBOOK 40 Rugged Computer	\$ 948.56	\$ 1,828.00
1	7300-0162	Panorama GPSB 3-1 Sharkee - antenna	\$ 358.54	\$ 588.00
1	PJ862	Brother PocketJet 8 PJ-862 - printer - B/W - direct thermal	\$ 397.04	\$ 529.00
1	Brother PocketJet 8 Printer Mount	Brother PocketJet 8 Printer Mount	\$ 242.89	\$ 369.00
1	7160-0539	Gamber-Johnson mounting component	\$ 34.48	\$ 64.00
1	7300-0461	Gamber-Johnson - Lind Automobile Bare Wire Leads Power Adapter	\$ 181.76	\$ 193.75
1	FZ-40EZ00RBM	Panasonic Toughbook 40 - AI Ready - 14" - Intel Core Ultra 5 - 135H - 16 GB RAM - 512 GB SSD - 4G	\$ 4,662.90	\$ 5,476.84
1	FZ-VBR401M	Panasonic xPAK 1D/2D Barcode Reader for TOUGHBOOK 40 Laptop	\$ 687.97	\$ 806.96
			\$ 8,064.21	\$ 10,814.55



**Turn-Key
Mobile, Inc.**

TURNKEY MOBILE INC

4510
Country Club Drive
Jefferson City Missouri 65109

Estimate

Estimate#	: EST-15824	Sales person/ISS	: Patrick Lee
Estimate Date	: 02/13/2026	Created By (ISS)	: LaMonica Archer
Expiry Date	: 03/31/2026	Purchasing Contract	: None

Bill To	Ship To
Tate County Sheriff Matt Wilson 1 Justice Drive , Mississippi	Tate County Sheriff Matt Wilson 1 Justice Drive Senatobia, Mississippi 38668

#	Item & Description	Qty	Rate	Amount
1	FZ-55JV-35BM Panasonic Mk3 BSKU, Win11 Pro, Intel Core i5-1345U vPro (up to 4.7GHz), AMT, 14.0" FHD 1000 nit Gloved Multi Touch, 16GB, Intel UHD, 512GB OPAL SSD, Intel Wi-Fi 6E, Bluetooth, 4G EM7595, GPS, COM Splitter, Dual Pass (Ch1:GPS/Ch2:WWAN), Mic and Infrared 2MP Webcam, Standard Battery, TPM 2.0, Emissive Backlit Keyboard, Flat, CF-SVCLTNF3YR - 3 Year Protection Plus Warranty, CF-SVC512SSD3Y - 3 Year No Return of Defective Drive, CF-SVCPDEP3Y - 3 Year Premier Deployment, FZ-SVCFESGEN10 - Field Engineering Support	21	3,450.00	72,450.00
2	HA-55LVDLT0 Panasonic Havis Lite Vehicle Dock (no pass) for Panasonic TOUGHBOOK 55 & 54. USB-A (2), Serial, LAN.	21	715.00	15,015.00
3	CF-LNDDC120HW Panasonic Lind 120 Watt 12-32 Volt Input Car Adapter for Toughbook for Hard Wired Installations (bare wire)	21	170.00	3,570.00
4	C-HDM-204 Havis 8.5" Heavy Duty Telescoping Pole, Side Mount, Short Handle	21	215.00	4,515.00
5	C-MD-112 Havis 11" Slide Out Locking Swing Arm with Motion Adapter	21	285.00	5,985.00
6	CF-SVCPSY5 Panasonic 4th and 5th years Public Safety Service Bundle Add on (Year 4 & 5 only). Must be purchased in conjunction with PS bundle base unit. Includes Premier, Protection Plus, Customer Portal, Disk Image Management, HDD No Return.	21	667.00	14,007.00
7	PKG-PSM-345 Havis Premium Pedestal Mount Package For 2011-2025 Dodge Durango & 2011-2022 Jeep Grand Cherokee Model Code WK	21	675.00	14,175.00

Sub Total **129,717.00**
Total **\$129,717.00**

Terms & Conditions
Looking forward to doing business with you. Shipping Charges are not included unless otherwise stated.

Note: Product, descriptions, and available inventory are updated frequently and may change without notice. The pricing provided in this quote is based on current market conditions and is subject to change due to various factors, including but not limited to supply chain changes and external economic conditions, including tariffs. To prevent raising prices across the board, Turn Key Mobile passes on international manufacturer surcharges and tariff fees as a separate line item on invoices.

All PO placed orders have net 30 day terms, no discounts. All full/partial invoice payments are due in NET30 terms, unless otherwise stated in contract. If order contains equipment with or without services, payment for all hardware and/or product delivered is expected to be paid upon delivery (to customer and/or service/installation provider). Services will not be invoiced until complete and approved. Credit card payments are accepted with a 3% Service Charge added to the overall invoice price. This Service Charge will be displayed as a separate line item. ACH payments are also accepted with no processing or service fees. An ACH form can be requested

Authorized Acceptance Signature

by email at AR@turnkeymobile.com.

Return Policy: All PANASONIC sales are final. ONLY Panasonic can make exceptions for returns. Any items or materials that are approved to be returned by the manufacturer and TKM, are subject to a 20% restocking fee. All return requests must be made within 30 days of delivery to customer.



Intercept



The #1 Selling High-Security X-ray Body Scanning System in the United States

- ✓ X-ray dose less than 1% of medical exam
- ✓ Patented technology for clear, distortion-free images
- ✓ Smallest footprint (3' x 6'). Easy to install, relocatable
- ✓ Photo ID link for evidentiary support
- ✓ Training by ARRT-certified radiology professionals
- ✓ Integrated Thermal Scanner option
- ✓ Ask us about federal and other grant funding

X-ray Body Scanning Solution for Contraband Detection Creates Safer Environments for All

Tek84 Intercept® is the most advanced x-ray body scanning system for the detection of weapons, drugs, cellphones, and other contraband in seconds. Intercept helps create safer environments for people who live or work inside correctional facilities and other high-security venues.

Patented technology, compact size, ease of operation, training and service, and data management features make Intercept the x-ray scanning system of choice for law enforcement, corrections, and security professionals.

- Detects metallic and nonmetallic threats concealed under clothing and within body cavities in 3.8 seconds.
- Ultra-low-dose x-ray scanning safely creates sharp, clear images.
- Deployed in local, state, and federal correctional facilities in nearly all 50 states and internationally.
- U.S. local, state, and federal funding available through several federal grant programs.
- The only x-ray body scanning system for law enforcement made in the USA.

Scientifically Proven Safe

Intercept meets the highest safety standards for both operators and subjects. It operates with ultra-low amounts of radiation, as low as 1% of the dose used in medical x-ray exams. Intercept meets federal standards for body scanner radiation safety established by the American National Standards Institute (ANSI N43-17).



(858) 676-5382

www.Tek84.com

13495 Gregg Street | Poway, CA 92064

Additional Intercept Safety Features:

- Multiple scan techniques provide choice and flexibility for specific scanning and security requirements.
- A three- by six-foot exclusion or safety zone – equal to the Intercept footprint – where operators and staff are prohibited during scanning for radiation safety. Intercept has the smallest operational footprint in the industry. The safety zone is tested 3-4 inches from the machine skins.
- TekNet, a secure database management tool for digital storage of subject information, scanning records, and up to 100 million images. It documents the annual radiation exposure for each subject in compliance with ANSI N43-17. It is an additional option primarily used for connecting multiple scanners in a grid-like manner.

Breakthrough Technology: Clear, Distortion-free Images

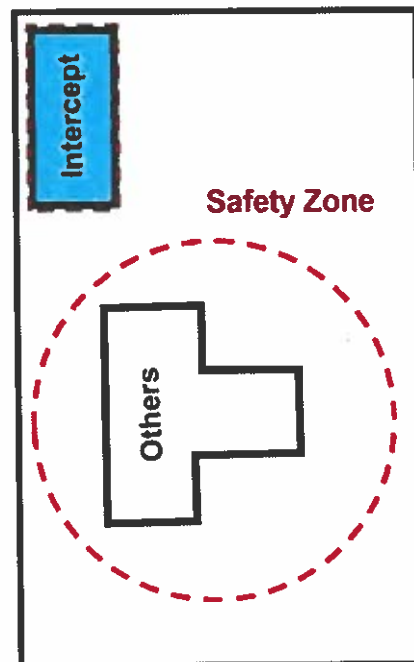
Intercept's patented technology renders the highest quality scans with minimal radiation and image distortion. Intercept looks through the body horizontally, the shortest path, with a mobile scanning beam that starts below the feet and moves vertically above the head. The required beam length is about 11 inches for most subjects, nearly half the length of stationary, fixed-angle beam scanners.

- Three scan filters – high-resolution, three-dimensional, and detail – provide analytical tools for identifying anomalies and minimizing false positives.
- An optional Mask Setting blurs faces and genitals to protect privacy in accordance with the U.S. Prison Rape Elimination Act.

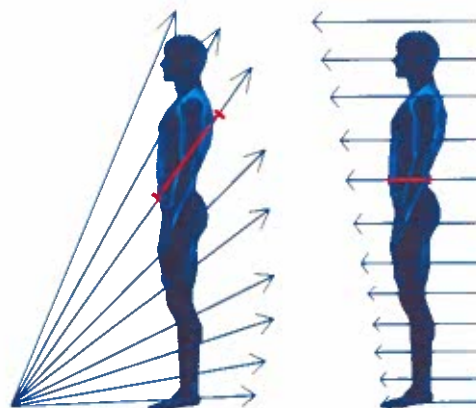
Superior Design Makes Scanning Fast, Simple

Superior design combines advanced scanning technology with ease of operation for quick scanning, which is essential in high-risk environments.

- Subjects simply stand still during scans (unlike other scanners with moving platforms), which is critical if individuals are uncooperative or impaired.
- Intercept scans can be completed in less than four



Intercept uses far less operational space than any other x-ray body scanning system.



Others

Tek84 Intercept

All x-ray images degrade as they pass through body tissue. The thicker the subject, the lower the quality of the resulting image. Intercept looks through the body horizontally, the shortest path, a tissue thickness of about 11 inches versus 16 inches for other systems.

seconds, more than three times faster than some conventional scanners.

- Intuitive touch-screen technology makes Intercept easy to operate.
- Smart technology automatically notifies the operator when a subject is out of position.

Certified Training and Unmatched 24/7 Service

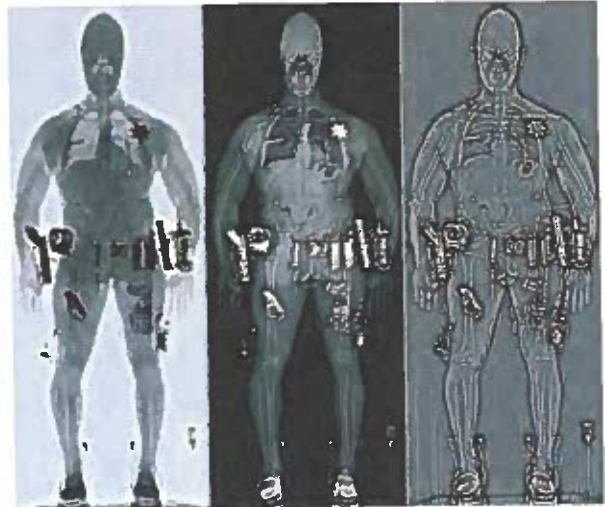
Tek84 partners with law enforcement to ensure professional and continual operation of Intercept. Operator training is critical after the initial installation, for future employees, and for annual recertification. Only Tek84 provides hands-on, on-site training with ARRT-certified radiology professionals.

- Our experts provide on-site training on system operation, radiation safety, and image interpretation.
- Affordable online simulator training using real-life contraband images complements initial instruction and provides essential training for new employees and required annual safety qualification.
- 24/7 customer service hotline plus full-time service technicians who work exclusively on body scanners.
- Tek84 provides expert witness testimony on legal issues such as radiation safety and image interpretation.

Easy Installation and Relocation

Intercept has the smallest footprint (3 x 6 feet) in the industry, which provides more location options in the tight confines of most jails and prisons.

- Intercept ships nearly fully assembled in two crates.
- Its compact size enables Intercept to be rolled through standard door frames.
- Complete installation with a single technician in less than two hours.
- Standard electrical outlets suffice, no special power needs.



HiRes

3D

Detail

Three different and unique scanning filters at 8 uSv provide the best opportunity for contraband detection.



Multiple exposure settings up to 8 uSv provide flexibility while complying with ANSI requirements.



Intuitive touch screen on a 27" industrial-grade monitor.

(858) 676-5382

www.Tek84.com

13495 Gregg Street | Poway, CA 92064